

Names In Business

W. H. Finigan, president of Charlotte Finishing Co., **W. H. Finigan**, president, and **W. H. Finigan**, president, are the names of three new business ventures in Charlotte, arranged to leave New York tomorrow on a flight to attend to the closing of the Knitting Machinery Exposition at Manchester, Oct. 10. They are scheduled to return Oct. 20 to New York. They also planned to visit cities in Germany and Italy to study production and selling of sweaters and knitted fabric. Charlotte Knitting is an affiliate of Huntley Knitting Co., New York.

John H. Hobson of Charlotte, senior vice president, resigned Tuesday from the National Bank and Trust Co. on Sept. 10, from \$663,018.08 a year salary to \$53,000.00 in 1961. He received \$1,105,624.00 from \$536,046.00. Capital and surplus were \$1,000,000.00 from \$470,000.00. He received \$1,105,624.00 from \$536,046.00. He received \$1,105,624.00 from \$536,046.00.

David M. Neill, vice president and trust officer of First National Bank of Charlotte, was on the program to discuss "Life Insurance in the 1960's" at a meeting in the Fifth Business Building recently. He recently was appointed a member of the National Research Committee of the Financial Public Relations Association.

J. Harry Napp, cashier in Charlotte of Wachovia Bank Trust Co., celebrating its 25th anniversary of his joining the Wachovia organization in 1936, was named to Charlotte in 1959 and since 1955 has been in charge of personal and cashier operations of the bank.

Key Socks Trade In Narrow Ranges

NEW YORK — A jump in **Honolulu Oil** was a feature of a mixed stock market early this afternoon. Trading was moderate to active.

Volume was dampened by semi-holiday conditions due to the Columbus Day observance. Some financial institutions were closed.

Changes of most key stocks were narrow but there were a few wide moves.

Buyers swarmed into **Honolulu Oil** on news that a Federal Judge had denied the Justice Department's plea to halt this company's \$30 million sales. The stock soared 1 1/2 points to 47 1/2 on an opening block of 11,000 shares, reaching a new high, and held a nine-point gain as the session wore on.

Some of the aircrafts were higher as President Kennedy reported that he saw no hope of an easy solution of the Berlin crisis. This news was accompanied by word of British Government of U. S. troops in Europe.

Motors were up, and textiles were unchanged to lower.

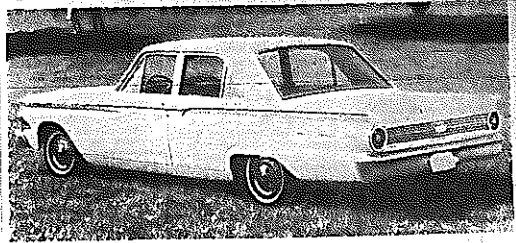
Late gains by rails, utilities and department stores helped pull an irregular stock market to the upper yesterday. Although the advance was small, it was enough to put the Associated Press average at a new historic high.

Arco Oil, reentered as a candidate for a deal similar to **Honolulu Oil's**, was up 1 1/2 points at the start then halted the gain.

Despite the reaching of a three-year agreement with the United Auto Workers, **Ford** continued to drop from its recent high, losing a point on reports that the Detroit and Chrysler dropped fractions.

Lesona continued to rise on word of faster writs for 1961-62. **International** machinery was up 1/2 point.

A report of a pickup in consumer borrowing may have helped **General Finance**, which



Ford Fairlane 500 Offers Four-Door And Two-Door Models

Fairlane Gives Wide Choice

The new Ford Fairlane, the first all Ford line since the **Ford** of 1955, is available in two and four-door models. The two series are the Fairlane and the luxurious Fairlane 500. Both series will be displayed in Charlotte on Nov. 2.

It is a standard size car with a greater passenger space than the 1960 Ford and an overall length almost equal to the 1961 Ford sedan.

The Fairlane resembles the earlier Galaxies with its grille, "Thunderbolt" roof line, slight fins that encompass round taillights and upturned silhouette.

More than 370 square inches of window space provides excellent visibility in all directions.

The Fairlane 500 offers 14 exterior colors, with each interior from combinations. The Fairlane 500 has 12 exterior colors with four interior color combinations.

The car is designed to provide maximum driving comfort and utility with a minimum of vehicle maintenance. Both a three-speed manual and an automatic transmission are available. Overdrive is optional on the 227 cubic inch V-8 engine.

An innovation is the "Trapezoid" wheel which has three and four round studs for post-1959 road.

Cotton Prices Weak; New Crop Plan Near

CHARLOTTE (Special Section) — **Furnished by J.A. Baker & Co. Middling inch Sp. 33.20**

NEW YORK — Cotton futures opened today unchanged to 25 cents a bale lower and continued easy through the morning. At midday, prices were 20 to 40 cents a bale lower than the previous close.

In early trading, ten October delivery notes were issued at New York, which brought out liquidation in nearby October contracts. Helms contributed to slight declines in current crop months.

Distant months were quiet, with trading activity announced for the 1962 cotton crop. The Secretary of Agriculture must announce the allotment not later than Oct. 13.

Trade opinion was mixed as to whether it will be lower or lower than the allotment this year of approximately 16,000,000 bales.

During the late session, commission house selling and hedging caused futures to ease further.

There was some switching from October to December in near months, with spot firms buying October against sales of the December position.

An innovation is the "Trapezoid" wheel which has three and four round studs for post-1959 road.

Corn, Wheat Totals Rise

WASHINGTON — The Agriculture Department estimated this year's production of corn for grain at 3,527,429,000 bushels and the wheat crop at 1,210,870,000 bushels.

The crop report estimate for 1961 bushels more than last month's forecast of 3,249,000,000 bushels. It compares with 3,372,000,000 bushels in 1960 and 3,013,757,000 for the ten-year 1950-59 average.

The wheat figure is 319,000,000 bushels more than 1,200,477,000 bushels in 1960. Total production was 1,259,353,000 bushels in 1960 and 1,094,720,000 for the ten-year average.

Markets At A Glance

11 P.M. Quotations By Associated Press

11 P.M. Close Today	11 P.M. Close Today	11 P.M. Close Today	
ARCO	47 1/2	ARCO	47 1/2
AT&T	34 1/2	AT&T	34 1/2
AVCO	31 1/2	AVCO	31 1/2
BA	31 1/2	BA	31 1/2
BE	31 1/2	BE	31 1/2
BL	31 1/2	BL	31 1/2
BO	31 1/2	BO	31 1/2
BR	31 1/2	BR	31 1/2
BS	31 1/2	BS	31 1/2
BT	31 1/2	BT	31 1/2
BV	31 1/2	BV	31 1/2
BW	31 1/2	BW	31 1/2
BX	31 1/2	BX	31 1/2
BY	31 1/2	BY	31 1/2
BZ	31 1/2	BZ	31 1/2
CA	31 1/2	CA	31 1/2
CB	31 1/2	CB	31 1/2
CC	31 1/2	CC	31 1/2
CD	31 1/2	CD	31 1/2
CE	31 1/2	CE	31 1/2
CF	31 1/2	CF	31 1/2
CG	31 1/2	CG	31 1/2
CH	31 1/2	CH	31 1/2
CI	31 1/2	CI	31 1/2
CJ	31 1/2	CJ	31 1/2
CK	31 1/2	CK	31 1/2
CL	31 1/2	CL	31 1/2
CM	31 1/2	CM	31 1/2
CN	31 1/2	CN	31 1/2
CO	31 1/2	CO	31 1/2
CP	31 1/2	CP	31 1/2
CQ	31 1/2	CQ	31 1/2
CR	31 1/2	CR	31 1/2
CS	31 1/2	CS	31 1/2
CT	31 1/2	CT	31 1/2
CU	31 1/2	CU	31 1/2
CV	31 1/2	CV	31 1/2
CW	31 1/2	CW	31 1/2
CX	31 1/2	CX	31 1/2
CY	31 1/2	CY	31 1/2
CZ	31 1/2	CZ	31 1/2
DA	31 1/2	DA	31 1/2
DB	31 1/2	DB	31 1/2
DC	31 1/2	DC	31 1/2
DD	31 1/2	DD	31 1/2
DE	31 1/2	DE	31 1/2
DF	31 1/2	DF	31 1/2
DG	31 1/2	DG	31 1/2
DH	31 1/2	DH	31 1/2
DI	31 1/2	DI	31 1/2
DJ	31 1/2	DJ	31 1/2
DK	31 1/2	DK	31 1/2
DL	31 1/2	DL	31 1/2
DM	31 1/2	DM	31 1/2
DN	31 1/2	DN	31 1/2
DO	31 1/2	DO	31 1/2
DP	31 1/2	DP	31 1/2
DQ	31 1/2	DQ	31 1/2
DR	31 1/2	DR	31 1/2
DS	31 1/2	DS	31 1/2
DT	31 1/2	DT	31 1/2
DU	31 1/2	DU	31 1/2
DV	31 1/2	DV	31 1/2
DW	31 1/2	DW	31 1/2
DX	31 1/2	DX	31 1/2
DY	31 1/2	DY	31 1/2
DZ	31 1/2	DZ	31 1/2
EA	31 1/2	EA	31 1/2
EB	31 1/2	EB	31 1/2
EC	31 1/2	EC	31 1/2
ED	31 1/2	ED	31 1/2
EE	31 1/2	EE	31 1/2
EF	31 1/2	EF	31 1/2
EG	31 1/2	EG	31 1/2
EH	31 1/2	EH	31 1/2
EI	31 1/2	EI	31 1/2
EJ	31 1/2	EJ	31 1/2
EK	31 1/2	EK	31 1/2
EL	31 1/2	EL	31 1/2
EM	31 1/2	EM	31 1/2
EN	31 1/2	EN	31 1/2
EO	31 1/2	EO	31 1/2
EP	31 1/2	EP	31 1/2
EQ	31 1/2	EQ	31 1/2
ER	31 1/2	ER	31 1/2
ES	31 1/2	ES	31 1/2
ET	31 1/2	ET	31 1/2
EU	31 1/2	EU	31 1/2
EV	31 1/2	EV	31 1/2
EW	31 1/2	EW	31 1/2
EX	31 1/2	EX	31 1/2
EY	31 1/2	EY	31 1/2
EZ	31 1/2	EZ	31 1/2
FA	31 1/2	FA	31 1/2
FB	31 1/2	FB	31 1/2
FC	31 1/2	FC	31 1/2
FD	31 1/2	FD	31 1/2
FE	31 1/2	FE	31 1/2
FF	31 1/2	FF	31 1/2
FG	31 1/2	FG	31 1/2
FH	31 1/2	FH	31 1/2
FI	31 1/2	FI	31 1/2
FJ	31 1/2	FJ	31 1/2
FK	31 1/2	FK	31 1/2
FL	31 1/2	FL	31 1/2
FM	31 1/2	FM	31 1/2
FN	31 1/2	FN	31 1/2
FO	31 1/2	FO	31 1/2
FP	31 1/2	FP	31 1/2
FQ	31 1/2	FQ	31 1/2
FR	31 1/2	FR	31 1/2
FS	31 1/2	FS	31 1/2
FT	31 1/2	FT	31 1/2
FU	31 1/2	FU	31 1/2
FV	31 1/2	FV	31 1/2
FW	31 1/2	FW	31 1/2
FX	31 1/2	FX	31 1/2
FY	31 1/2	FY	31 1/2
FZ	31 1/2	FZ	31 1/2
GA	31 1/2	GA	31 1/2
GB	31 1/2	GB	31 1/2
GC	31 1/2	GC	31 1/2
GD	31 1/2	GD	31 1/2
GE	31 1/2	GE	31 1/2
GF	31 1/2	GF	31 1/2
GG	31 1/2	GG	31 1/2
GH	31 1/2	GH	31 1/2
GI	31 1/2	GI	31 1/2
GJ	31 1/2	GJ	31 1/2
GK	31 1/2	GK	31 1/2
GL	31 1/2	GL	31 1/2
GM	31 1/2	GM	31 1/2
GN	31 1/2	GN	31 1/2
GO	31 1/2	GO	31 1/2
GP	31 1/2	GP	31 1/2
GQ	31 1/2	GQ	31 1/2
GR	31 1/2	GR	31 1/2
GS	31 1/2	GS	31 1/2
GT	31 1/2	GT	31 1/2
GU	31 1/2	GU	31 1/2
GV	31 1/2	GV	31 1/2
GW	31 1/2	GW	31 1/2
GX	31 1/2	GX	31 1/2
GY	31 1/2	GY	31 1/2
GZ	31 1/2	GZ	31 1/2
HA	31 1/2	HA	31 1/2
HB	31 1/2	HB	31 1/2
HC	31 1/2	HC	31 1/2
HD	31 1/2	HD	31 1/2
HE	31 1/2	HE	31 1/2
HF	31 1/2	HF	31 1/2
HG	31 1/2	HG	31 1/2
HH	31 1/2	HH	31 1/2
HI	31 1/2	HI	31 1/2
HJ	31 1/2	HJ	31 1/2
HK	31 1/2	HK	31 1/2
HL	31 1/2	HL	31 1/2
HM	31 1/2	HM	31 1/2
HN	31 1/2	HN	31 1/2
HO	31 1/2	HO	31 1/2
HP	31 1/2	HP	31 1/2
HQ	31 1/2	HQ	31 1/2
HR	31 1/2	HR	31 1/2
HS	31 1/2	HS	31 1/2
HT	31 1/2	HT	31 1/2
HU	31 1/2	HU	31 1/2
HV	31 1/2	HV	31 1/2
HW	31 1/2	HW	31 1/2
HX	31 1/2	HX	31 1/2
HY	31 1/2	HY	31 1/2
HZ	31 1/2	HZ	31 1/2
IA	31 1/2	IA	31 1/2
IB	31 1/2	IB	31 1/2
IC	31 1/2	IC	31 1/2
ID	31 1/2	ID	31 1/2
IE	31 1/2	IE	31 1/2
IF	31 1/2	IF	31 1/2
IG	31 1/2	IG	31 1/2
IH	31 1/2	IH	31 1/2
II	31 1/2	II	31 1/2
IJ	31 1/2	IJ	31 1/2
IK	31 1/2	IK	31 1/2
IL	31 1/2	IL	31 1/2
IM	31 1/2	IM	31 1/2
IN	31 1/2	IN	31 1/2
IO	31 1/2	IO	31 1/2
IP	31 1/2	IP	31 1/2
IQ	31 1/2	IQ	31 1/2
IR	31 1/2	IR	31 1/2
IS	31 1/2	IS	31 1/2
IT	31 1/2	IT	31 1/2
IU	31 1/2	IU	31 1/2
IV	31 1/2	IV	31 1/2
IW	31 1/2	IW	31 1/2
IX	31 1/2	IX	31 1/2
IY	31 1/2	IY	31 1/2
IZ	31 1/2	IZ	31 1/2
JA	31 1/2	JA	31 1/2
JB	31 1/2	JB	31 1/2
JC	31 1/2	JC	31 1/2
JD	31 1/2	JD	31 1/2
JE	31 1/2	JE	31 1/2
JF	31 1/2	JF	31 1/2
JG	31 1/2	JG	31 1/2
JH	31 1/2	JH	31 1/2
JI	31 1/2	JI	31 1/2
JJ	31 1/2	JJ	31 1/2
JK	31 1/2	JK	31 1/2
JL	31 1/2	JL	31 1/2
JM	31 1/2	JM	31 1/2
JN	31 1/2	JN	31 1/2
JO	31 1/2	JO	31 1/2
JP	31 1/2	JP	31 1/2
JQ	31 1/2	JQ	31 1/2
JR	31 1/2	JR	31 1/2
JS	31 1/2	JS	31 1/2
JT	31 1/2	JT	31 1/2
JU	31 1/2	JU	31 1/2
JV	31 1/2	JV	31 1/2
JW	31 1/2	JW	31 1/2
JX	31 1/2	JX	31 1/2
JY	31 1/2	JY	31 1/2
JZ	31 1/2	JZ	31 1/2
KA	31 1/2	KA	31 1/2
KB	31 1/2	KB	31 1/2
KC	31 1/2	KC	31 1/2
KD	31 1/2	KD	31 1/2
KE	31 1/2	KE	31 1/2
KF	31 1/2	KF	31 1/2
KG	31 1/2	KG	31 1/2
KH	31 1/2	KH	31 1/2
KI	31 1/2	KI	31 1/2
KJ	31 1/2	KJ	31 1/2
KK	31 1/2	KK	31 1/2
KL	31 1/2	KL	31 1/2
KM	31 1/2	KM	31 1/2
KN	31 1/2	KN	31 1/2
KO	31 1/2	KO	31 1/2
KP	31 1/2	KP	31 1/2
KQ	31 1/2	KQ	31 1/2
KR	31 1/2	KR	31 1/2
KS	31 1/2	KS	31 1/2
KT	31 1/2	KT	31 1/2
KU	31 1/2	KU	31 1/2
KV	31 1/2	KV	31 1/2
KW	31 1/2	KW	31 1/2
KX	31 1/2	KX	31 1/2
KY	31 1/2	KY	31 1/2
KZ	31 1/2	KZ	31 1/2
LA	31 1/2	LA	31 1/2
LB	31 1/2	LB	31 1/2
LC	31 1/2	LC	31