

# Men Who Became Fathers Before Sept. 15 Defere

Livest  
Newspaper  
In The  
Carolinas

Not War—Only Defeat—Destroys the Freedom Of Men And The Privileges Of Democracy

# THE CHARLOTTE NEWS

Final  
\*\*\*

ESTABLISHED 1898

CHARLOTTE, NORTH CAROLINA, MONDAY, APRIL 12, 1943

16 Pages—Price Five Cents

# AFRICA FALLS BEFORE ALLIED ARMS SMASHING DRIVE; MOUNTAIN TANKS

## New Ruling Sets Policy On Drafting Of Fathers

### Classifications Are Revised

By Charles Malony  
WASHINGTON—(AP)—Major revision in draft classifications were made today to facilitate the task of providing the armed forces this year with virtually every physically able man between 18 and 38 years old who has to come for individual deferment.

Selective Service Director Lewis B. Hershey and War Manpower Commissioner Paul V. McNutt told a press conference that drafting on such a scale would be necessary to meet the goal of 10,000,000 men in uniform before next Jan. 1.

The only grounds for deferment after the ban against calling fathers in lifted—possibly some time in May—will be farm work, industrial, essential in non-agricultural work, and the possibility that induction would mean "extreme privation and hardship." Hershey and McNutt said.

They added that the nation has only 14,000,000 physically fit men in the 18-through-37 bracket, with about half of that number already in the armed forces.

Of the remaining 7,000,000, they said, 3,200,000 would be deferred for occupation or hardship by the end of the year, and the rest will be drafted during the next nine months.

## Public Responds To Big Bond Drive

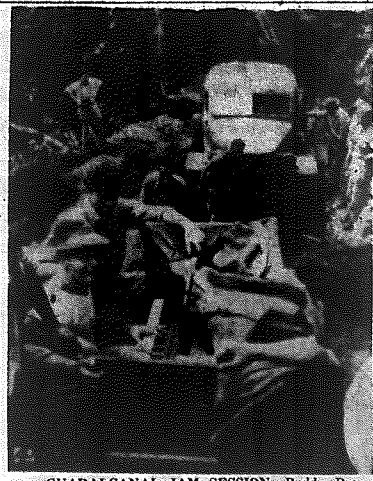
WASHINGTON—(AP)—A tremendous public response to its \$13,000,000,000 bond drive, the biggest in history, was reported by the Treasury today on the basis of the first few hours of sales.

A statement said banks, insurance companies and investors of all classes were reported purchasing bonds at a first-day pace greater than that achieved during the opening phase of the first war loan campaign last December.

Volunteer workers by the thousands are being trained to help put the war bonds in not a gift but an investment—the safest in the world since it is backed by the Government—that will pay interest.

Uncle Sam needs the money to help pay for the war. Money put into war bonds is not a gift but an investment—the safest in the world since it is backed by the Government—that will pay interest.

ANTI-INFLATIONARY  
Money put into bonds will help slow down inflation which is forever lurking around the corner, waiting for a chance to blow living costs sky-high.



GUADALCANAL I.M. SESSION—Buddy Brennan's Foxhole Fugitives got into the groove with Buddy at the ivories when their truck got jammed up in ruins and mud on Guadalcanal. The band gives with a swing interlude while trekking from camp to camp on the battle-scarred South Pacific island. This session continued until the trucks were freed from the mud.

## Hitler and Duce Confer While Axis Arms Falter

### Invasion Threat Over Parley

LONDON—(AP)—Adolf Hitler and Premier Mussolini have just concluded a four-day conference in the shadow of the most alarming Axis prospect since the war began—expulsion from Africa and immediate Allied invasion of the European continent.

The Axis leaders, according to the German radio, admitted their meeting was held "against a background of stern military events, especially in the Italian realm," but came up with the typical Axis statement that they had decided on themselves and their people to "the complete annihilation of any future danger which might threaten the European-African area from the west coast of Africa."

Hitler and Benito Mussolini met in the shadow of the most alarming Axis prospect since the war began—expulsion from Africa and immediate Allied invasion of the European continent.

The location of this twelfth war time meeting of the two European Axis partners in which Japanese representatives apparently took no part, was described by the Axis radio as having occurred at Hitler's headquarters, which would have meant almost anywhere in occupied Europe.

With Field Marshal Erwin Rommel's Africa Corps and its full retreat up the Tunisian coast before British and American armies, Italian cities, naval vessels and Mediterranean supply lines under violent

With Field Marshal Erwin Rommel's Africa Corps and its full retreat up the Tunisian coast before British and American armies, Italian cities, naval vessels and Mediterranean supply lines under violent

With Field Marshal Erwin Rommel's Africa Corps and its full retreat up the Tunisian coast before British and American armies, Italian cities, naval vessels and Mediterranean supply lines under violent

## Hitler and Duce Confer While Axis Arms Falter

### Invasion Threat Over Parley

LONDON—(AP)—Adolf Hitler and Premier Mussolini have just concluded a four-day conference in the shadow of the most alarming Axis prospect since the war began—expulsion from Africa and immediate Allied invasion of the European continent.

The Axis leaders, according to the German radio, admitted their meeting was held "against a background of stern military events, especially in the Italian realm," but came up with the typical Axis statement that they had decided on themselves and their people to "the complete annihilation of any future danger which might threaten the European-African area from the west coast of Africa."

Hitler and Benito Mussolini met in the shadow of the most alarming Axis prospect since the war began—expulsion from Africa and immediate Allied invasion of the European continent.

The location of this twelfth war time meeting of the two European Axis partners in which Japanese representatives apparently took no part, was described by the Axis radio as having occurred at Hitler's headquarters, which would have meant almost anywhere in occupied Europe.

With Field Marshal Erwin Rommel's Africa Corps and its full retreat up the Tunisian coast before British and American armies, Italian cities, naval vessels and Mediterranean supply lines under violent

With Field Marshal Erwin Rommel's Africa Corps and its full retreat up the Tunisian coast before British and American armies, Italian cities, naval vessels and Mediterranean supply lines under violent

With Field Marshal Erwin Rommel's Africa Corps and its full retreat up the Tunisian coast before British and American armies, Italian cities, naval vessels and Mediterranean supply lines under violent

With Field Marshal Erwin Rommel's Africa Corps and its full retreat up the Tunisian coast before British and American armies, Italian cities, naval vessels and Mediterranean supply lines under violent

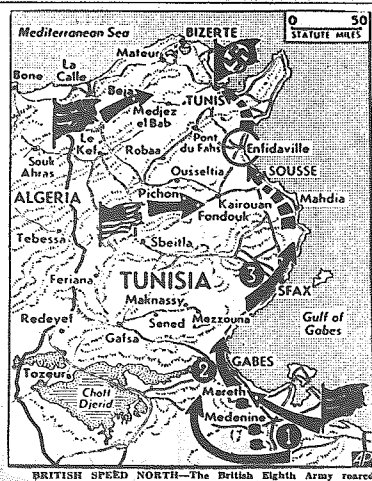
With Field Marshal Erwin Rommel's Africa Corps and its full retreat up the Tunisian coast before British and American armies, Italian cities, naval vessels and Mediterranean supply lines under violent

With Field Marshal Erwin Rommel's Africa Corps and its full retreat up the Tunisian coast before British and American armies, Italian cities, naval vessels and Mediterranean supply lines under violent

With Field Marshal Erwin Rommel's Africa Corps and its full retreat up the Tunisian coast before British and American armies, Italian cities, naval vessels and Mediterranean supply lines under violent

With Field Marshal Erwin Rommel's Africa Corps and its full retreat up the Tunisian coast before British and American armies, Italian cities, naval vessels and Mediterranean supply lines under violent

With Field Marshal Erwin Rommel's Africa Corps and its full retreat up the Tunisian coast before British and American armies, Italian cities, naval vessels and Mediterranean supply lines under violent



BRITISH SPEED NORTH—The British Eighth Army reared ahead today in the finest blitzkrieg style to capture Sousse. Rommel's forces were driven up a steeply rising island from Sousseville, 27 miles to the north. In two days Montgomery's great army had driven 15 miles from Sousse. The ultimate objective of the British and their allies were said to be 10 miles from Sousse, and 20 miles further on. Meanwhile American and British forces had struck to seize the city of Kairouan. Arrows depict the progress of the Allied forces for the last few days.

## Withholding Tax Action Demanded

### Call Made for Democratic-Republican Movement To Quickly Enact Levy

WASHINGTON—(AP)—Speaker Rayburn, Democrat, Texas, called today for joint Democratic-Republican action to enact quickly a 20 per cent withholding levy against the taxable portion of wages and salaries, as a measure to help prevent inflation.

Rayburn left the speakers' rostrum to give newspapermen a statement after Chairman Dougherty, Democrat, North Carolina, of the Ways and Means Committee, told the House that if the leadership of both parties would agree to a simple withholding levy, he would introduce such a bill and seek to bring it from the committee to the floor immediately.

Dougherty made his statement shortly after his committee refused by a 10 to 6 vote to lay aside reciprocal trade legislation until a new pay-as-you-go tax measure could be presented to the House.

"There is one thing we can do right quickly," he told reporters, "that is enact a withholding levy. Everybody fears inflation because of all the money amounting to billions of dollars that is circulating in this country."

The withholding levy would be the most effective stab at inflation I can think of. It is pay-as-you-go also.

Dougherty subsequently told the House: "The recent action of the House on the tax bill and the

CHINESE COUNTER ATTACK  
CHUNGKING—(AP)—The Chinese counter-attack against the Japanese advance activity near the port of Swatow in the southern province of Kwangtung, was launched a counter attack against Japanese forces, inflicted heavy casualties and captured prisoners, the High Command said in a communique today.

CHINESE COUNTER ATTACK  
CHUNGKING—(AP)—The Chinese counter-attack against the Japanese advance activity near the port of Swatow in the southern province of Kwangtung, was launched a counter attack against Japanese forces, inflicted heavy casualties and captured prisoners, the High Command said in a communique today.

## Rommel Pulls Back To Ridge To The North

### Patton Takes Faid Pass, Another Avenue To Strike Toward Sea

ALLIED HEADQUARTERS IN NORTH AFRICA—(AP)—The British Eighth Army entered Sousse at 8:30 A. M. today in its rapid push northward along the Tunisian coast while First Army units knocked out armored remnants of the German Africa Corps on the plain northwest of Kairouan after occupying that city yesterday.

Field Marshal Erwin Rommel's men were reeling under heavy blows from both ground and air forces and they offered light opposition.

The Kairouan plain engagement took place as German tanks were intercepted while attempting to escape northward. Ten of them were knocked out.

TERRIFIC AIR BLENDS  
United States and British air forces struck terrifically again, leaving scores of enemy vehicles scattered in wreckage, or in flames and shooting down a total of 41 enemy planes yesterday against a loss of fourteen of their own.

American Lightnings caught another 10 enemy transport planes, port formations crossing the Sicilian Straits and destroyed 21 German bombers.

The Second U. S. Army Corps under Lieut. Gen. George S. Patton Jr. took Faid Pass without opposition, adding another avenue through the central Tunisian mountain wall to the coastal plain

ALLIED HEADQUARTERS IN NORTH AFRICA—(AP)—The British Eighth Army has taken 20,000 prisoners in the Battle of Tunisia since March 20, it was announced today.

penetrated Saturday through Fondouk Pass.

American armor led the way through Faid Pass—the same gateway which Marshal Rommel used to force his mid-February offensive—and, pursuing ten German tanks northward toward Kairouan, captured a German tank.

The Eighth Army's advance—125 miles from the Wadi El Akarit line in 12 days—was slightly impeded by demolitions and difficult country, but General Sir Bernard Montgomery's vanguard developed little fighting in the Sousse and Kairouan areas.

The ridge running inland from the Fondouk Pass, 27 miles north of Sousse.

NEW ENEMY POSITION  
The enemy's new position ranges 40 miles inland along this ridge and runs northwestward extending 90 miles to the Mediterranean coast near Cape Serrat, 35 miles west of Bizerte. French troops recently recaptured that cape.

Some 500 prisoners, mostly Germans, were taken by Lieut. Gen. K. A. N. Anderson's First Army.

After getting on to the green and flower-dotted plain of Sousse.

See BRITISH on page 2

## Talk About N. Y. Attack

### Late Bulletins

MUNDA RAIDED  
WASHINGTON—(AP)—Two bombing raids causing heavy damage and starting fires at Munda in the Solomons were reported today by the United States Navy and communicated which told also of a raid on Kahlili, and of two attacks on Kiska in the Aleutians.

STEEL WORKERS QUIT  
GARY, Ind., (AP)—Production halted today in eight open-hearth furnaces of the No. 5 steel mill at Gary, Ind., because of a strike by the workers.

CHINESE COUNTER ATTACK  
CHUNGKING—(AP)—The Chinese counter-attack against the Japanese advance activity near the port of Swatow in the southern province of Kwangtung, was launched a counter attack against Japanese forces, inflicted heavy casualties and captured prisoners, the High Command said in a communique today.

GIRAUD TO U. S.  
LONDON—(AP)—The financial news reported today without comment that the negotiations for the return of Giraud to the United States were being made by Gen. Henri Honoré Giraud, commander in chief of French forces in Africa, and his financial representatives to Washington for private negotiations in connection with the forthcoming Allied monetary conference.

BURMA RAIDS MADE  
NEW DELHI, (AP)—RAF bombers raided a Japanese-occupied village on the Mayu Peninsula in Burma, and dropped bombs on the important Myittha railway line about 45 miles southwest of Katha yesterday, a British communique said today.

CHINESE COUNTER ATTACK  
CHUNGKING—(AP)—The Chinese counter-attack against the Japanese advance activity near the port of Swatow in the southern province of Kwangtung, was launched a counter attack against Japanese forces, inflicted heavy casualties and captured prisoners, the High Command said in a communique today.

## New Draft Classes Announced

WASHINGTON—(AP)—The revised classification for selective service announced today by War Manpower Commissioner Paul V. McNutt follows:

1-A—Available for military service.

1-B—Conscientious objector available for non-combatant military service.

1-C—Member of full or naval forces of the United States.

1-D—Man necessary in his essential civilian activity.

1-E—Man necessary in the war production program.

## Send Your Fighting Dollars Into Battle

TO THE READERS OF THE NEWS:  
The 13 billion second war loan is the responsibility of every one of us.

As Americans, we must lend our Government every dollar we can during these next few weeks. No matter how much or how little our pay checks are, each of us must do his part.

The money is urgently needed to back up our armed forces now on the offensive with the weapons they must have to win and win quickly.

1-F—Man with child or children deferred by reason of maintaining bona fide relationship.

1-G—Man with dependents which requires his presence in agricultural occupation or essential activity.

1-H—Man deferred because of his agricultural occupation or endeavor.

1-I—Man with child or children deferred by reason of maintaining bona fide relationship.

1-J—Man deferred because of his agricultural occupation or endeavor.

1-K—Man with child or children deferred by reason of maintaining bona fide relationship.

1-L—Man with dependents which requires his presence in agricultural occupation or essential activity.

1-M—Man deferred because of his agricultural occupation or endeavor.

1-N—Man with child or children deferred by reason of maintaining bona fide relationship.

1-O—Man with dependents which requires his presence in agricultural occupation or essential activity.

1-P—Man deferred because of his agricultural occupation or endeavor.

1-Q—Man with child or children deferred by reason of maintaining bona fide relationship.

1-R—Man with dependents which requires his presence in agricultural occupation or essential activity.

1-S—Man deferred because of his agricultural occupation or endeavor.

1-T—Man with child or children deferred by reason of maintaining bona fide relationship.

1-U—Man with dependents which requires his presence in agricultural occupation or essential activity.

1-V—Man deferred because of his agricultural occupation or endeavor.

1-W—Man with child or children deferred by reason of maintaining bona fide relationship.

1-X—Man with dependents which requires his presence in agricultural occupation or essential activity.

1-Y—Man deferred because of his agricultural occupation or endeavor.

1-Z—Man with child or children deferred by reason of maintaining bona fide relationship.

1-AA—Man with dependents which requires his presence in agricultural occupation or essential activity.

1-AB—Man deferred because of his agricultural occupation or endeavor.

1-AC—Man with child or children deferred by reason of maintaining bona fide relationship.

1-AD—Man with dependents which requires his presence in agricultural occupation or essential activity.

1-AE—Man deferred because of his agricultural occupation or endeavor.

1-AF—Man with child or children deferred by reason of maintaining bona fide relationship.

1-AG—Man with dependents which requires his presence in agricultural occupation or essential activity.

1-AH—Man deferred because of his agricultural occupation or endeavor.

1-AI—Man with child or children deferred by reason of maintaining bona fide relationship.

1-AJ—Man with dependents which requires his presence in agricultural occupation or essential activity.

1-AK—Man deferred because of his agricultural occupation or endeavor.

1-AL—Man with child or children deferred by reason of maintaining bona fide relationship.

1-AM—Man with dependents which requires his presence in agricultural occupation or essential activity.

1-AN—Man deferred because of his agricultural occupation or endeavor.

1-AO—Man with child or children deferred by reason of maintaining bona fide relationship.

1-AP—Man with dependents which requires his presence in agricultural occupation or essential activity.

1-AQ—Man deferred because of his agricultural occupation or endeavor.

1-AR—Man with child or children deferred by reason of maintaining bona fide relationship.

1-AS—Man with dependents which requires his presence in agricultural occupation or essential activity.

1-AT—Man deferred because of his agricultural occupation or endeavor.

1-AU—Man with child or children deferred by reason of maintaining bona fide relationship.

1-AV—Man with dependents which requires his presence in agricultural occupation or essential activity.

1-AW—Man deferred because of his agricultural occupation or endeavor.

1-AX—Man with child or children deferred by reason of maintaining bona fide relationship.

1-AY—Man with dependents which requires his presence in agricultural occupation or essential activity.

1-AZ—Man deferred because of his agricultural occupation or endeavor.

1-BA—Man with child or children deferred by reason of maintaining bona fide relationship.

1-BB—Man with dependents which requires his presence in agricultural occupation or essential activity.

1-BC—Man deferred because of his agricultural occupation or endeavor.

1-BD—Man with child or children deferred by reason of maintaining bona fide relationship.

1-BE—Man with dependents which requires his presence in agricultural occupation or essential activity.

1-BF—Man deferred because of his agricultural occupation or endeavor.

1-BG—Man with child or children deferred by reason of maintaining bona fide relationship.

1-BH—Man with dependents which requires his presence in agricultural occupation or essential activity.

1-BI—Man deferred because of his agricultural occupation or endeavor.

1-BJ—Man with child or children deferred by reason of maintaining bona fide relationship.

1-BK—Man with dependents which requires his presence in agricultural occupation or essential activity.

1-BL—Man deferred because of his agricultural occupation or endeavor.

1-BM—Man with child or children deferred by reason of maintaining bona fide relationship.

1-BN—Man with dependents which requires his presence in agricultural occupation or essential activity.

1-BO—Man deferred because of his agricultural occupation or endeavor.

1-BP—Man with child or children deferred by reason of maintaining bona fide relationship.

1-BQ—Man with dependents which requires his presence in agricultural occupation or essential activity.

1-BR—Man deferred because of his agricultural occupation or endeavor.

1-BS—Man with child or children deferred by reason of maintaining bona fide relationship.

1-BT—Man with dependents which requires his presence in agricultural occupation or essential activity.

1-BU—Man deferred because of his agricultural occupation or endeavor.

1-BV—Man with child or children deferred by reason of maintaining bona fide relationship.

1-BW—Man with dependents which requires his presence in agricultural occupation or essential activity.

1-BX—Man deferred because of his agricultural occupation or endeavor.

1-BY—Man with child or children deferred by reason of maintaining bona fide relationship.

1-BZ—Man with dependents which requires his presence in agricultural occupation or essential activity.

1-CA—Man deferred because of his agricultural occupation or endeavor.

1-CB—Man with child or children deferred by reason of maintaining bona fide relationship.

1-CC—Man with dependents which requires his presence in agricultural occupation or essential activity.

1-CD—Man deferred because of his agricultural occupation or endeavor.

1-CE—Man with child or children deferred by reason of maintaining bona fide relationship.

1-CF—Man with dependents which requires his presence in agricultural occupation or essential activity.

1-CG—Man deferred because of his agricultural occupation or endeavor.

1-CH—Man with child or children deferred by reason of maintaining bona fide relationship.

1-CI—Man with dependents which requires his presence in agricultural occupation or essential activity.

1-CJ—Man deferred because of his agricultural occupation or endeavor.

1-CK—Man with child or children deferred by reason of maintaining bona fide relationship.

1-CL—Man with dependents which requires his presence in agricultural occupation or essential activity.

1-CM—Man deferred because of his agricultural occupation or endeavor.

1-CN—Man with child or children deferred by reason of maintaining bona fide relationship.

1-CO—Man with dependents which requires his presence in agricultural occupation or essential activity.

1-CP—Man deferred because of his agricultural occupation or endeavor.

1-CQ—Man with child or children deferred by reason of maintaining bona fide relationship.

1-CR—Man with dependents which requires his presence in agricultural occupation or essential activity.

1-CS—Man deferred because of his agricultural occupation or endeavor.

1-CT—Man with child or children deferred by reason of maintaining bona fide relationship.

1-CU—Man with dependents which requires his presence in agricultural occupation or essential activity.

1-CV—Man deferred because of his agricultural occupation or endeavor.

1-CW—Man with child or children deferred by reason of maintaining bona fide relationship.

1-CX—Man with dependents which requires his presence in agricultural occupation or essential activity.

1-CY—Man deferred because of his agricultural occupation or endeavor.

1-CZ—Man with child or children deferred by reason of maintaining bona fide relationship.

1-DA—Man with dependents which requires his presence in agricultural occupation or essential activity.

1-DB—Man deferred because of his agricultural occupation or endeavor.

1-DC—Man with child or children deferred by reason of maintaining bona fide relationship.