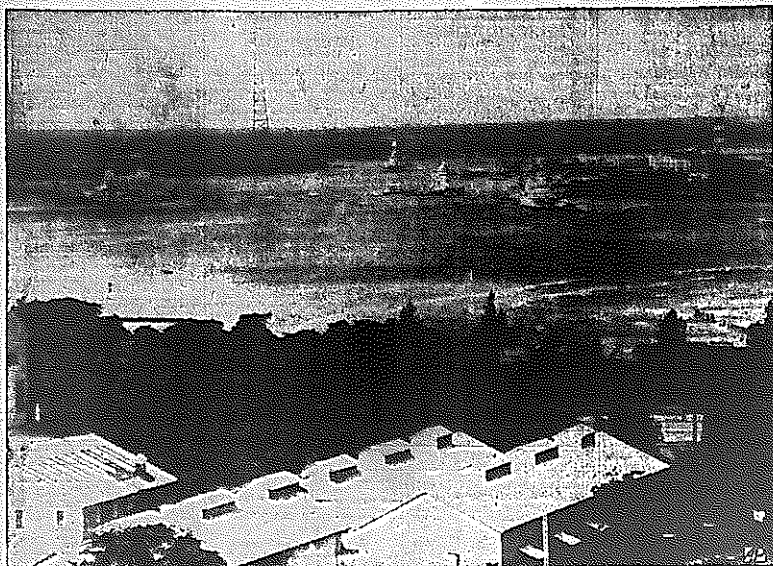
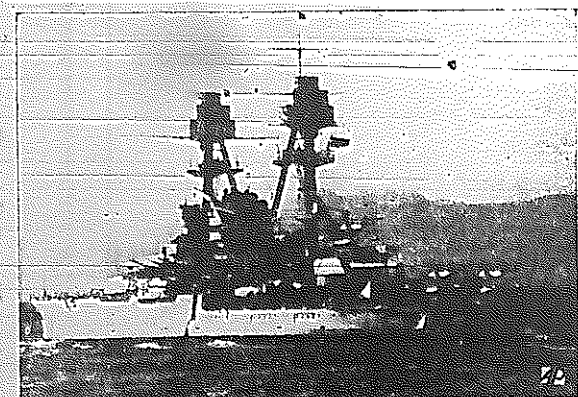


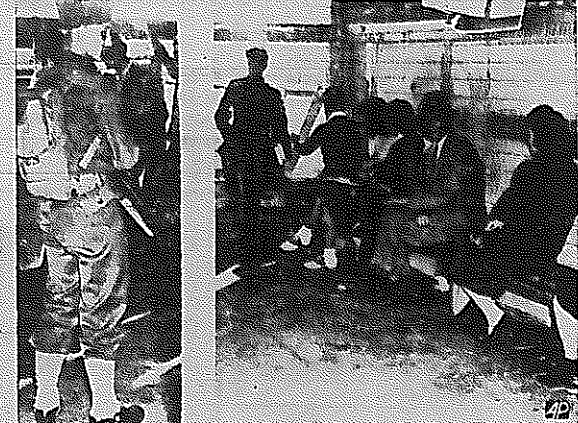
WAR PICTURES: Japs Attack American Territory By Air And Sea



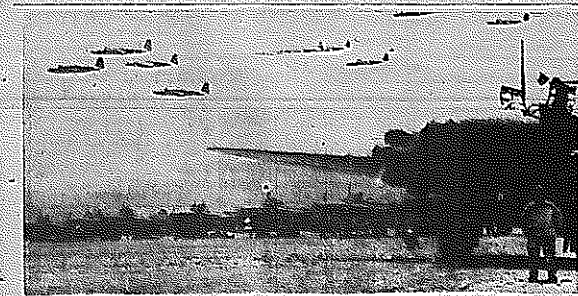
PEARL HARBOR NAVAL BASE—Units of the United States fleet are shown based at Pearl Harbor, Hawaii, which was attacked by Japanese bombing planes a few hours before Japan declared war on the United States and Great Britain. Pearl Harbor, located near Honolulu, is this country's naval stronghold in the Pacific.



U. S. BATTLESHIP REPORTED ATTACKED—Reports from the scene said Japanese planes set fire to the United States battleship (Oklahoma) (above) in a sudden raid on Pearl Harbor naval base and Honolulu.



JAPANESE DETAINED AT CALIFORNIA TERMINAL—Several score Japanese were taken into custody by Federal Bureau of Investigation agents when a ferry from Terminal Island, on which are located a number of naval establishments, docked at San Pedro, Calif. They were hurried into a wire enclosure for questioning and were guarded by troops from nearby Fort MacArthur.



READY FOR ATTACK—Japanese bombers are shown on and over an unidentified air base in Japan or China. This photo was made sometime ago as Jap

Round Japs Up Quickly

Start Setting Up Intern Camp

BALBOA Canal Zone—(P)—With the United States maintaining a war-time guard over the vital Panama Canal Zone, the Panama Government decided today to intern all Japanese residents on the isthmus and affirm its intention to cooperate fully with the United States.

The roundup by Panama of Japanese aliens began soon after word was received yesterday of the Japanese attack on American outposts in the Pacific. Proceeded smoothly during the night while the U. S. Army rushed construction of an internment tent city.

Panama police reported that 130 of the 300 Japanese residents in the City of Panama had been taken in custody by early morning. Others were picked up at other cities and villages of the Republic.

The Panamanians, who will turn the Japanese over to the United States authorities, daily selected two demands by the Japanese Minister that they be released.

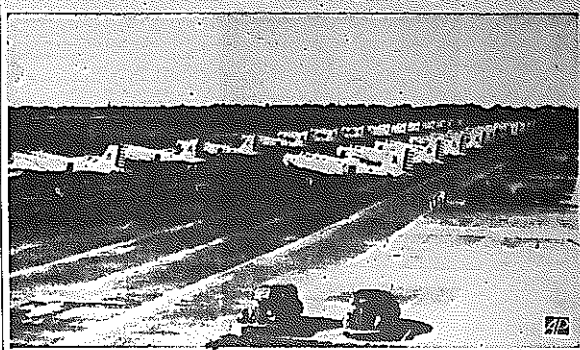
After a night-long meeting, President Dr. Ricardo Adolfo de La Guardia and the Cabinet issued a proclamation that Panama would continue to cooperate with the Government of the United States energetically in this grave emergency, which immediately threatened the security of the Panama Canal and the Republic.

The Government also forbade transportation of gold or other funds belonging to the Japanese Government or subjects in Panama.

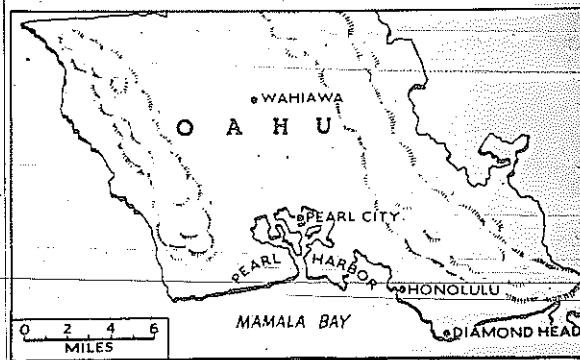
United States officers said they were "ready for anything" that might threaten the security of the low waterway link between the Atlantic and Pacific Oceans.

Manchukuo Wars on United States

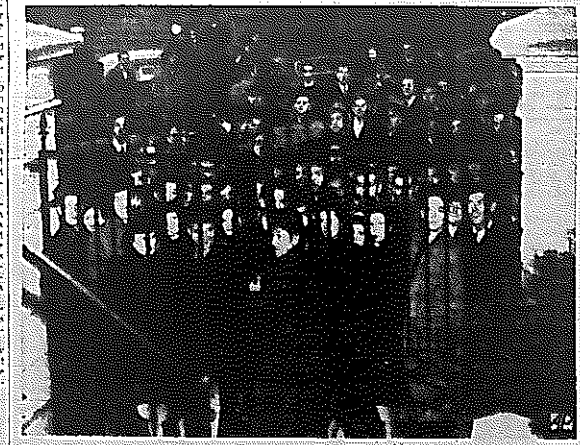
NEW YORK—(P)—The German Radio announced today that Manchukuo had declared war on the United States and Great Britain. NBC heard the broadcast.



ARMY AIR BASE IN HAWAII BOMBED—United States Army Air Corps bombers are shown lined up for inspection at Hickam Field, near Honolulu, which was bombed by Japanese planes Dec. 7. A direct bomb hit was reported to have killed 550 men at the field.



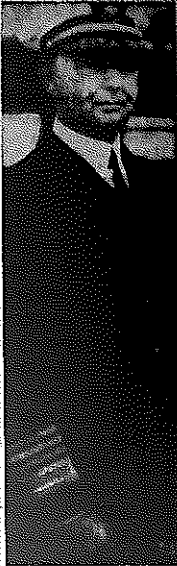
SCENE OF ATTACK ON U. S. BASE—This map denotes the southern part of the island of Oahu of the Hawaiian group, showing its relation to Pearl Harbor. In the Japanese bombing attack, the town of Wahiawa, northwest of Honolulu, was reported damaged as well as Hickam air field near Honolulu.



CROWDS JAM WHITE HOUSE GATES—Soon after President Roosevelt announced that Japan had attacked the U. S., crowds began to jam against the White House gates watching the nation's leaders come and go, waiting for word of what Roosevelt planned to do.



SMILES OF THE JAPANESE ENVOYS ARE GONE—These Japanese envoys, Kichisaburo Nomura (left), ambassador to the United States, and Saburo Kurusu (right), special envoy, were without their customary affable smiles as they left the State Department in Washington Sunday where they conferred with Secretary of State Hull prior to President Roosevelt's announcement that Japanese bomb-



HAWAII COMMANDER—Rear Admiral Claude G. Blich (above) is the U. S. Navy commanding officer at Pearl Harbor, Hawaii.

Settlement Taken Over

Shanghai Fully Occupied by Japs

SHANGHAI—(P)—Japanese Army and Navy forces swarmed throughout the main section of the century-old International Settlement today but their officers proclaimed a minimum of restrictions upon Americans and Britons in the area as long as they preserve law and order.

The Japanese Consulate asked the settlement administration to carry on.

The newly-occupied section was the one from which United States Marines and British Soldiers have kept the Japanese for years. It was only a week ago that the Marines withdrew.

As the World War came to this city, the British gunboat, *Peterel*, a 310-ton craft which normally carried 55 men, was sunk. She appeared to blow up at her anchorage. The Japanese immediately bombarded her with artillery and machine gun fire and she blazed furiously and sank. The crew was believed lost.

In Tokyo, the Japanese broadcast an announcement that they had sunk the boat.

TELL COMMANDER

The Japanese served notice on the commander of the U. S. Gunboat *Waka* that the war had begun.

The *Waka*, left here for communications among Americans after the Marines withdrew, was anchored not far from the *Peterel*, but she suffered no immediate harm.

The Japanese in Tokyo said they had captured the *Waka*.

The Japanese seized the American-owned *Shanghai Power and Light* company, in the downtown area which the Japanese have held since 1931.

Banks were asked to close for the time being.

The first elevated railway in New York City opened for traffic on July 2, 1867.

Gifts for everyone

Gifts for everyone