



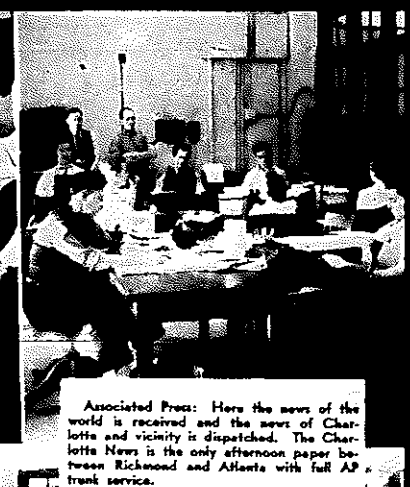
which will be purified raw aluminum.



Linotype: One of a battery of twelve which converts copy into type slugs. This machine sets headlines only.



Sports Department: Devoted exclusively to the coverage of sporting events everywhere.



Associated Press: Here the news of the world is received and the news of Charlotte and vicinity is dispatched. The Charlotte News is the only afternoon paper between Richmond and Atlanta with full AP trunk service.

ederal
the
on,
as
l in
sits
tick.
for
em
ro-
ing

99,
me-
nes
orth
ed-
the
304
ced
000
65.
om
of
ain,
ro-

Ah! This is a congenial theme. It is the newspaper process, untrue to life in that it is presented in slow motion, whereas the tempo of any afternoon newspaper is an accelerating rush.

A newspaper is a many-sided enterprise. It is journalistic, in that the news has to be gathered and written. It is manufacturing, in that the news has to be put into type and the type into print. It is merchandising in two ways, in that both advertisers and subscribers must be solicited and serviced. Because of its varied nature, it is highly departmentalized.

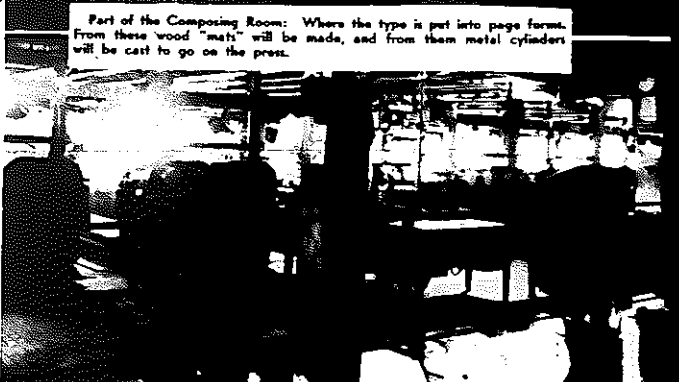
Some of the departments of The Charlotte News, each of which contributes to the emergence of the paper, are here spread out for your view.



The City Room: Where reporters write their stories, where telegraph copy is edited and headed, and where the quantity and display of news is ordered.



Part of the Composing Room: Where the type is put into page form. From these wood "mats" will be made, and from them metal cylinders will be cast to go on the press.



Broadside of the Press, fed from rolls below, this machine can print as many as 80 pages simultaneously.



Hot Off the Griddle: Street sales boys dashing to their boats.



The Big Press: Which prints papers at the rate of 34,000 an hour, whence they are conveyed in an endless flow to the mailing and carriers' room.