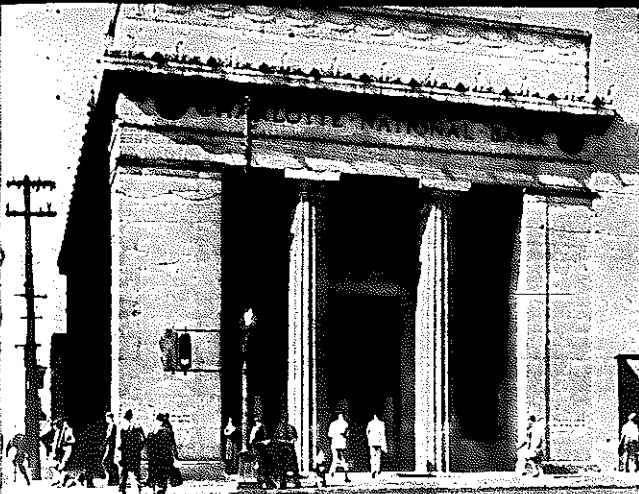


consisting of  
ly known as  
is heard of  
throughout the

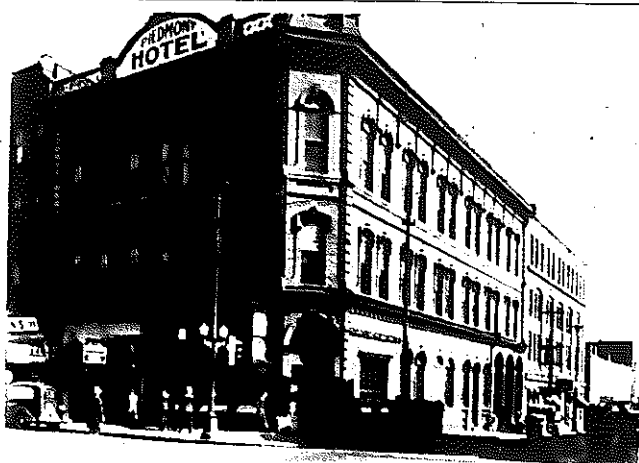


The Charlotte National Bank, established February 1st, 1897, has shown a consistent growth increasing its capitalization from \$125,000.00 to its present capitalization of \$500,000.00. This bank employs 27 people, carries 8,500 accounts and has resources totaling five and three-quarter millions. Its deposits total four and three-quarter millions. This bank serves the two Carolinas, other banks, individuals, firms and corporations. A complete banking service is rendered handling savings and commercial accounts, modern safety deposit vault, sells foreign exchange, letters of credit and travelers cheques. An automatic teller has recently been installed in the lobby of the bank for the convenience of its customers. The Charlotte National is known throughout the Piedmont area as "The Friendly Bank."



#### QUEEN CITY COACH COMPANY

Organized in 1928 the Queen City Coach Company shows vigorous continued growth. L. A. Love, a pioneer in the bus business in North Carolina is general manager of the company. He came here from the Eastern Carolina Coach Company where he was general manager. J. H. Quattlebaum is traffic manager. This company serves a wide area in the Piedmont area extending from Asheville to Wilmington and from Wadesboro to Florence, S. C. This company also operates the Greensboro-Fayetteville Bus Line, extending from Greensboro to Charleston, S. C., Durham to Rockingham, and High Point to Rockingham.



The Union National Bank, Charlotte, was established in June, 1908, and has a capitalization of \$300,000 and surplus and undivided profits of \$600,000. This bank employs 21 people. The Union National offers its customers a Trust department, commercial and savings accounts. This is a safe, conservative financial institution that has rendered a first-class service to the people of the Carolinas for the past thirty years.



North Carolina's oldest bank is located in Charlotte—the Commercial National Bank, having been established in 1874. During the 64 years which have passed since the date of its founding, the Commercial National Bank has merged its own history with that of the Piedmont Carolinas so successfully, that it has played an important part in the development of this section for more than three generations. Today, with years of service and experience behind it, the Commercial National Bank remains modern and progressive—playing a more important role than ever in giving assistance toward the continued development of this region.

Attractive tree-lined approach to downtown Charlotte. Office buildings in the background.

