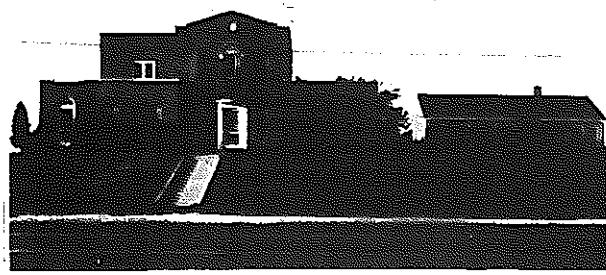


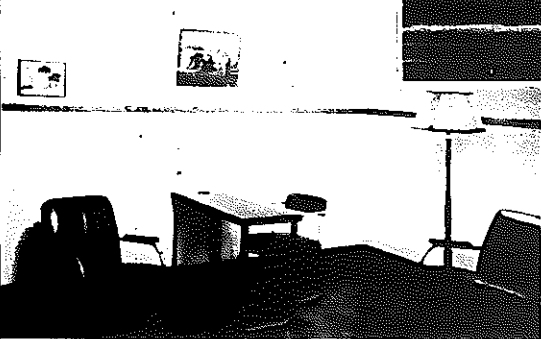


Charlotte has the distinction of being the birthplace of one of the South's most exclusive chain of restaurants—the S. & W. Cafeterias, operating in eight of the key cities of the southland: Charlotte, Raleigh, Roanoke, Asheville, Washington, Knoxville, Chattanooga and Atlanta. Mr. Sherrill today has associated with a group of the most experienced restaurant men in this country, managing a business which amounts to about \$2,250,000 a year and provides employment for 1,000 people. The S. & W. Cafeterias have a total seating capacity of 4,200, serving on an average of 7,500,000 meals annually. The first unit of the system was opened in Charlotte eighteen years ago and the magnificent appointments of these restaurants and the elegant service they provide the public have been made the subject of success stories in publications of national circulation. One of the S. & W. Cafeterias—to give some idea of their modernly-appointed service—seats 900 people and another represents an investment of \$250,000. Although they provide a service at a nominal and popular charge, the accompanying photographs are illustrative of their elegant appointments.

The three accompanying photographs will give the reader some idea of the excellent facilities that are now being offered the people of Charlotte in the care of their pets and other animals. The brick, steel, fire-proof plant shown above together with the operating room and waiting room are recent pictures of the new Parker and McLain Hospital.

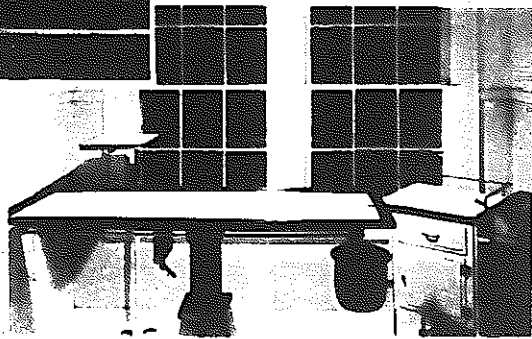


The capacity of this veterinary hospital is at the present time 84 small animals. The capacity is being increased. Modern X-Ray and operating room equipment grace this establishment. The hospital is located on Wilkinson Boulevard, Charlotte. Both Drs. Parker and McLain are graduate veterinarians coming here from Gastonia.



Waiting Room

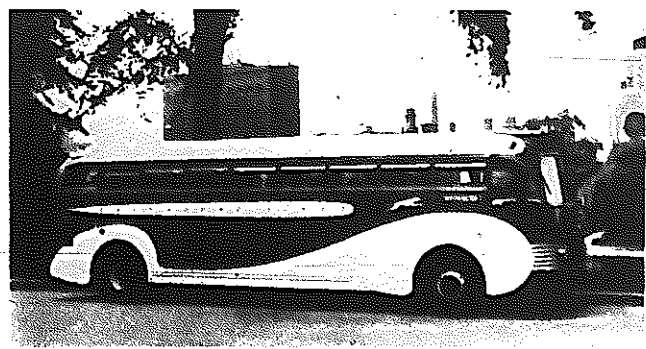
Parker & McLain Hospital



Operating Room

J. M. Harry & Company, morticians, 406 North Tryon Street, Charlotte, offers an ambulance service in addition to a superior undertaking service. This company invites the public to investigate the exceptional services of this company before the necessity arises. This service costs no more.

The entire fleet of Super-Coaches, which links Charlotte with the thousands of cities and towns on Greyhound's nation-wide system, is rapidly being air-conditioned. It is expected that all of these coaches will have this new comfort feature before heavy travel to the New York World's Fair begins late next spring.



The  
Gos  
grou  
Falls  
mills  
cloth  
card

The  
mills sh  
America  
Compa  
Carolina  
and m  
combed  
courts

C. A.  
Secret