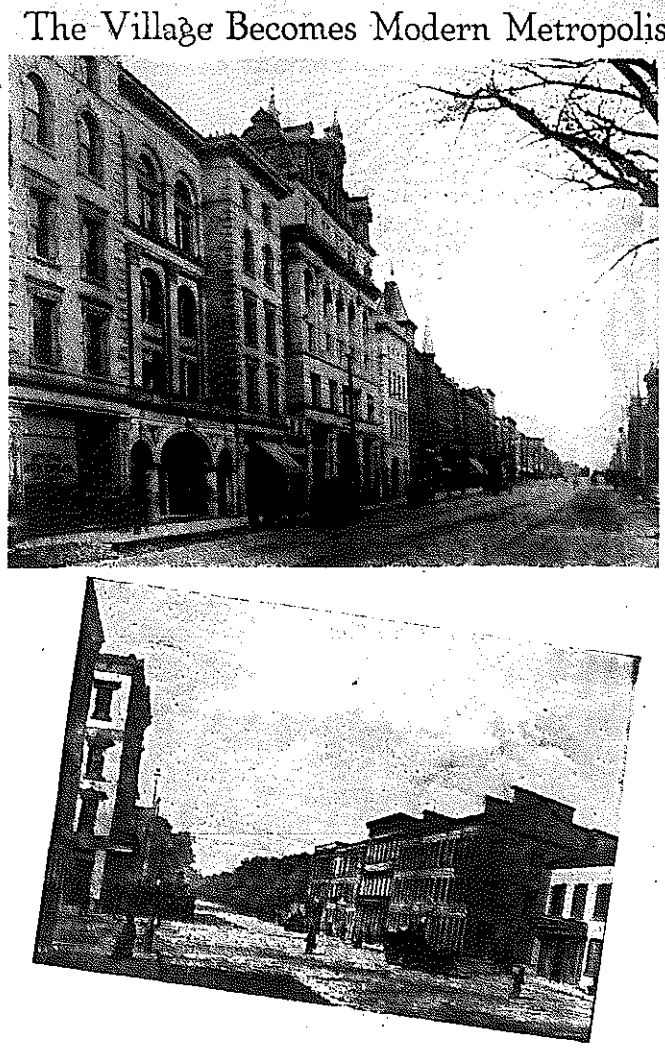


PICTURES TELL STORY OF CITY'S GROWTH

The Village Becomes Modern Metropolis



THE CAMERA RECORDS 63 YEARS OF GROWTH IN CHARLOTTE—Tom Franklin's dramatic picture at left shows South Tryon Street (looking north) as it appears today. At upper right the same scene as it appeared in the early 1900's, and at lower right an uptown scene in 1875, the centennial of the Mecklenburg Declaration of Independence. These pictures present a graphic story of the development of a metropolis.

Charlotte Is Capital Of Carolina Business And Industry, With Varied, Rich Market

Huge Manufacturing Output And Wage Total; Big Volume Of Wholesale And Retail Business... Fifty years ago business in the Town of Charlotte on this suburban territory was 90 per cent agricultural and ten per cent industrial... Today Charlotte is the recognized capital of Carolina business and industry...

Financial And Bank Center In Charlotte

City Is Carolinian's Leader And Of Importance In Entire Nation... Steady advance through a long period of years despite occasional setbacks and financial storms has earned Charlotte its undisputed leadership in Carolina banking activities... The history of financial affairs in Charlotte includes chapters recorded in the usual vicissitudes of expansion, contractions and revivals...

Cotton Textile Industry Makes Tremendous Growth In Carolinas During Half-Century

More Than 11,000,000 Spindles In Two States, With Huge Annual Output... The amazing growth of the cotton textile manufacturing industry, centering at Charlotte, is shown clearly by the increase in spindles from approximately 1,700,000 a half century ago to the present total of approximately 17,000,000... North Carolina and South Carolina alone have, in round numbers, 11,750,000 spindles, while the United States possesses 26,400,000... The investments in knitting mills have been higher than that of the cotton mills, and the full-fashioned silk hosiery plants pay an average wage well above that of the cotton mills...

City Airport Is Stop For Great Planes

Recent Development Adds Greatly To Civic Assets Of Charlotte... Charlotte's municipal airport at Juneau Station, constructed in 1936 and 1937 in co-operation with the Works Progress Administration, is an unemployment relief project... The development of airplanes in recent years has been so rapid that this port soon will require expansion and negotiations now are in progress between the municipal authorities and agencies of the Federal Government for a cooperative financial agreement to pay the costs of the proposed additional work, expected to cost from \$100,000 to \$150,000... This airport is the result of a slow but steady development of aviation facilities for Charlotte that was started in 1919 by the late C. C. Coddington, wealthy automobile distributor and civic and commercial leader...

- IN THIS SECTION
Page 2—Charlotte as a Medical Center.
1—Radio-Electric Development; The Weather Bureau.
3—Member of Commerce; Cotton Manufacturers.
4—The City as a Church Center.
5—Post Office Growth; The Masonic Fraternity.
10—Mini-Museum; Textile Development.
11—Municipal Association; Women's Club.
12—Red Cross; Parent-Teacher and Other Associations.
13—Sullivan Army, Family Service and YWCA.
14—Merchant Association; Masonic Club.
15—Jewish Community; Women's Organizations.