

'She Missed Me About 2 Inches,' Says Confessed Killer

LINCOLN, Neb. —(UP)—A courageous housewife almost shot Charles Starkweather down but missed and was knifed to death by the 19-year-old mass killer, a confession read at Starkweather's murder trial said Wednesday.

Mrs. C. Lauer Ward, wife of a wealthy Lincoln businessman, missed Starkweather by

about two inches as he advanced toward her in the upstairs of her home, according to the confession, made in Douglas, Wyo., after the red-headed killer's capture.

It was introduced by the defense apparently because it detailed to the jury for the first time 10 of 11 killings Starkweather has admitted.

The most dramatic portion of the confession dealt with the killings at the expensive residence of the Wards. Mrs. Ward and maid Lillian Fend were at home when the killer forced his way in.

He said the women both "acted nice" until about 2 p.m. when he noticed Mrs.

Ward had been upstairs.

"She missed me about two inches with a .22," the confession said. "Then she just looked at me and backed up and began to run. All I had was that knife so I let it go at her. It stopped right in her back."

"She was still alive, so I left her laying on the bed. The dog

was there so I had to kill him to keep him from barking. The maid was there. I tied her up, all but the feet.

"About 6:30 or 7 that night the man came home. I told him not to move. But he did anyway. We was by the basement steps. We got into a fight. He got the gun from

me, so I pushed him down the basement steps.

"The gun landed on the floor and went off. He got up and started for it, but I was first. He picked up an iron. And I said if I had to kill him I would so he lay it down. I said for him to walk back up the steps and we would tie him up

and leave town.

"He started to walk up the stairs. He got about half way and began to run. I shot him in the back once. He got to the top of the stairs and ran for the front door. He had it halfway open when I shot him."

Starkweather did not describe the killing of the maid.

CAROLINA
CONCRETE
PIPE CO.

Hutchison Ave. Ext.
Phone ED 2-3574

Concrete Pipe for all
Drainage Purposes



58TH

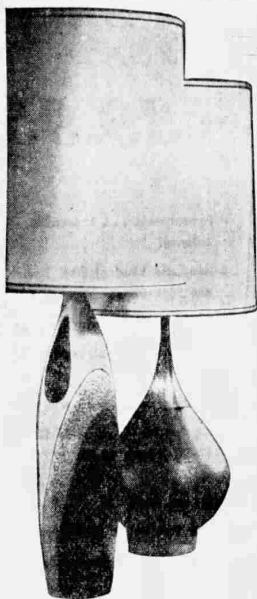


Table Lamps

Reg. 17.98 to 27.98 **12.88** ea.

Take advantage of this outstanding buy for your home . . . ideal gift for the bride, also! Beautifully designed table lamps that add elegance to today's contemporary home! Lovely, Westwood table lamps, skillfully crafted with metal or modern ceramic bases; topped with attractive shades. Your choice of many styles; colors.

lamps, Ivey's fifth floor

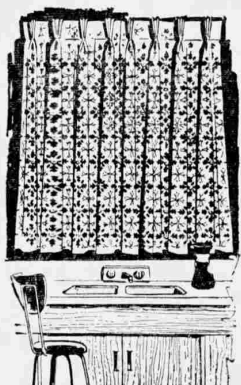
Ready-Made Draperies

For the Early American interior . . .

Patterned Draperies

Regular 11.98 pr. **6.98** pr.

Buy now and save! Decorate your windows with these lovely, patterned drapes in tiny provincial designs, that give a decorator's touch to the Early American type room. Handsomely tailored with full Chrome-spun linings; 63" length, single window width. Choice of four patterns.



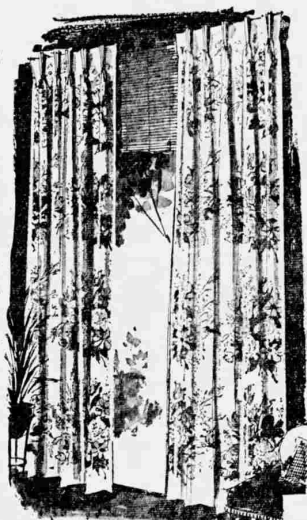
Now at a special savings! Full lined

Draw Draperies

Single width Reg. 16.98 pr. **8.98** pr.

Double width Reg. 29.98 pr. **16.98** pr.

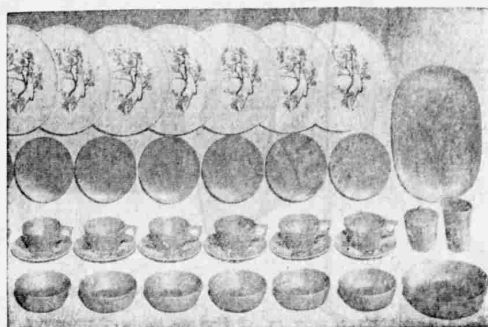
Compare these beautiful draw draperies with those selling for twice the price! Fully lined draperies that add beauty and protection to your windows; tailored for years of service. Your choice of many contemporary designs and colorful floral patterns in a wide range of colors. Drapes are 90" long.



draperies, Ivey's fifth floor

95 Piece Unbreakable china and stainless flatware combination

Dinnerware & Flatware Set



45-Pc. Melmac dinnerware & 50-Pc. flatware set

37.95
usually 52.90

45-Pc. Melmac Dinnerware Set when bought separately **29.95** 50-Pc. Stainless Flatware when bought separately **9.95**

New beauty for your everyday dining table . . . durable, yet delicate-looking

Texas-Ware, molded melamine dinnerware and easy-care stainless steel

flatware! No chips or broken handles to worry about . . . guaranteed for

2 full years against breakage! Absolutely safe in scalding water and auto-

matic dishwasher. Decorative pattern molded in; won't fade! Choice of

"Rose" pattern (yellow) or "Blossoms" (pink or yellow); decorated and solid

pieces. 8 each: dinner plates, bread and butters; cups, saucers, soup bowls;

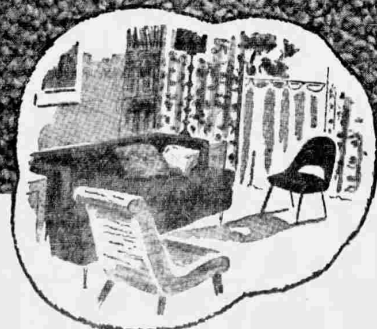
1 each: platter, bowl, creamer, sugar and lid. Eight six-piece place settings

in lovely Rondelay pattern of stainless steel; 2 serving pieces.

housewares, Ivey's fifth floor

Room Size and Over Size Rugs

25% to 50% off



Terms: 10.00 down, up to
18 months to pay.

rugs, Ivey's fourth floor

	Reg.	Sale		Reg.	Sale
12x12'5", 100% wool, Georgian floral	197.95	119.95	15x9'3", 100% wool, bisque beige	193.25	116.25
15x8'11", 100% wool, snowdrop beige	222.75	111.45	9x6'5", 100% wool, floral	61.25	48.00
15x7', 100% wool, snowdrop beige	183.00	87.50	12x22'11", 100% wool, French camel	315.30	198.90
12x10'2", 100% wool, beige tweed	175.50	99.95	12x12'5", 100% wool, nutria	217.50	119.95
15x16'9", 100% wool, almond green	390.00	189.95	12x12'2", 100% wool, tweed	187.50	99.95
15x9', 100% wool, crystal grey	157.50	99.95	15x9', all wool, sandalwood	167.50	99.95
15x11'6", 100% wool, nutria	268.80	124.80	12x17'1", wool/nylon/rayon blend, tropic sand	179.25	99.50
15x16'4", 100% wool, bayberry grey	380.80	176.80	9x11'3", wool/nylon/rayon blend	82.25	39.95
15x17'4", 100% wool, aqua	304.60	187.85	9x11'9", rayon, natural, beige tweed	76.40	49.35
12x15'4", 100% wool, ocean green	215.25	133.25	15x9'7", rayon, suntan tweed	103.80	66.95
25x34" throw rugs	8.00-14.00	4.00	12x12'2", rayon, beige and charcoal tweed	128.00	64.00