

Livest Newspaper In The Carolinas

THE CHARLOTTE NEWS-OPINION

Final

ACT PRUSSIAN INVASION PLINGE

Red Army 50 Miles From Tilsit

By EDDY GILMORE MOSCOW (AP)—Russian armies applying a great pincer upon East Prussia swept today within 50 miles of Tilsit and Memel and threatened the southern boundary of that home of the Junkers with a plunge across the Narew River.

Marshal Konstantin Rokossovski, besieging Warsaw for the 15th day, directed a threatening army group toward East Prussia from positions northeast of the Polish capital. This group increased the menace to Warsaw, too, by its curve to the Vistula and outflank the Polish city from the north.

Russian troops already were seven or more miles into the Szwab Triangle, which Germany snatched to East Prussia from Poland in 1920. In the north, the Soviet Army group of 27,000 soldiers, Gen. Chai Chirshchovskiy's three artillery shells into the German positions and fought bitter and repeated counter-attacks at several gateways to East Prussia.

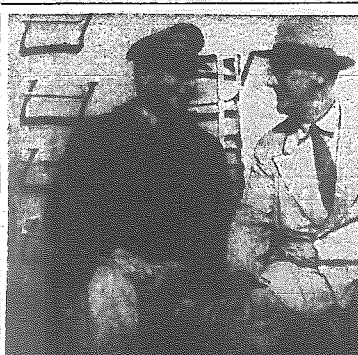
In this great effort, the Germans started reporting that they were greatly outnumbered. On the threat to the south of East Prussia, the official German news agency DNB said the Russians started a new offensive yesterday between Warsaw and Augustow with strong forces, which made some penetrations.

WIDEN VISTULA BREACH A hundred miles or so south of Warsaw, the Russians widened the breach across the Vistula River to 42 miles and advanced steadily to within 28 miles of Kielce. In that area the Red Army stood within 35 miles of German Silesia and within 35 of Krakow, ancient capital of Poland and her fifth city.

The Germans reported that another breakthrough had been achieved over the Vistula 30 miles north of Krakow.

See RED PINCH on Page 6

Swift-Advance Made In Burma SOUTHASIAN ASIA COMMAND HEADQUARTERS (AP)—Allied troops in a swift seven mile advance during the past 24 hours have reached a point 17 miles southwest of Meikong on the railway to Mandalay. Allied Headquarters announced today.



ROOSEVELT AT PEARL HARBOR—President Roosevelt (center) has an informal chat with Gen. Douglas MacArthur (left), southwest Pacific commander-in-chief, aboard a cruiser at Pearl Harbor during the President's visit to Hawaii. At the right is Admiral Chester W. Nimitz, Pacific Fleet commander-in-chief. (AP Wirephoto from U. S. Navy.)

Open Air Drive For Philippines

GENERAL HEADQUARTERS, SOUTHWEST PACIFIC (AP)—The air phase of the battle for reconquest of the Philippines has begun just as the ground fight for reconquest of Guam ended in triumph.

The first bombing of the Philippines since the fall of Corregidor to the Japanese May 6, 1942, was announced today by Gen. Douglas MacArthur, back to headquarters after a historic Pacific war conference with President Roosevelt.

MELOURNE, Australia (AP)—Australia's 4,500,000 voters, including civilians and service personnel, will ballot Aug. 19 on proposals which would concentrate in the National Parliament many powers now held by the six commonwealth states.

Swift-Advance Made In Burma SOUTHASIAN ASIA COMMAND HEADQUARTERS (AP)—Allied troops in a swift seven mile advance during the past 24 hours have reached a point 17 miles southwest of Meikong on the railway to Mandalay. Allied Headquarters announced today.

Thousands Training To Shoot Off Flying Bombs LONDON (AP)—The Daily Mail in a dispatch from Stockholm, today quoted an Austrian research center who fled from Germany as saving 250,000 to 500,000 persons are making "secret weapons" for the Nazis.

MacArthur & Nimitz Teamed Up For Fight By JOHN M. HIGHTOWER WASHINGTON (AP)—Establishment of closest co-operation between General Douglas MacArthur and Admiral Chester W. Nimitz in preparation for coming offensive in the Western Pacific presumably was one of President Roosevelt's objectives in going to Hawaii.



Hit Oil Dumps And Airfields By AUSTIN BEALMEAR LONDON (AP)—American heavy bombers smashed in force today at oil dumps and airfields near Paris and at rail yards in the German border city of Saarbrücken and the Alsace Lorraine cities of Strasbourg, Mulhouse and Belfort.

Isolation Of Paris Air Drive Goal Hit Oil Dumps And Airfields By AUSTIN BEALMEAR LONDON (AP)—American heavy bombers smashed in force today at oil dumps and airfields near Paris and at rail yards in the German border city of Saarbrücken and the Alsace Lorraine cities of Strasbourg, Mulhouse and Belfort.

Isolation Of Paris Air Drive Goal Hit Oil Dumps And Airfields By AUSTIN BEALMEAR LONDON (AP)—American heavy bombers smashed in force today at oil dumps and airfields near Paris and at rail yards in the German border city of Saarbrücken and the Alsace Lorraine cities of Strasbourg, Mulhouse and Belfort.

Isolation Of Paris Air Drive Goal Hit Oil Dumps And Airfields By AUSTIN BEALMEAR LONDON (AP)—American heavy bombers smashed in force today at oil dumps and airfields near Paris and at rail yards in the German border city of Saarbrücken and the Alsace Lorraine cities of Strasbourg, Mulhouse and Belfort.

Isolation Of Paris Air Drive Goal Hit Oil Dumps And Airfields By AUSTIN BEALMEAR LONDON (AP)—American heavy bombers smashed in force today at oil dumps and airfields near Paris and at rail yards in the German border city of Saarbrücken and the Alsace Lorraine cities of Strasbourg, Mulhouse and Belfort.

Isolation Of Paris Air Drive Goal Hit Oil Dumps And Airfields By AUSTIN BEALMEAR LONDON (AP)—American heavy bombers smashed in force today at oil dumps and airfields near Paris and at rail yards in the German border city of Saarbrücken and the Alsace Lorraine cities of Strasbourg, Mulhouse and Belfort.

Isolation Of Paris Air Drive Goal Hit Oil Dumps And Airfields By AUSTIN BEALMEAR LONDON (AP)—American heavy bombers smashed in force today at oil dumps and airfields near Paris and at rail yards in the German border city of Saarbrücken and the Alsace Lorraine cities of Strasbourg, Mulhouse and Belfort.

Isolation Of Paris Air Drive Goal Hit Oil Dumps And Airfields By AUSTIN BEALMEAR LONDON (AP)—American heavy bombers smashed in force today at oil dumps and airfields near Paris and at rail yards in the German border city of Saarbrücken and the Alsace Lorraine cities of Strasbourg, Mulhouse and Belfort.



WORKERETTE—Typing the war-working womanhood of Great Britain, Doris Magnus, above, was awarded the title "Miss War Worker-1944" by Sussex County, together with a cup which is her outgrowth, because 1944 is the Victory Year.

Isolation Of Paris Air Drive Goal Hit Oil Dumps And Airfields By AUSTIN BEALMEAR LONDON (AP)—American heavy bombers smashed in force today at oil dumps and airfields near Paris and at rail yards in the German border city of Saarbrücken and the Alsace Lorraine cities of Strasbourg, Mulhouse and Belfort.

Isolation Of Paris Air Drive Goal Hit Oil Dumps And Airfields By AUSTIN BEALMEAR LONDON (AP)—American heavy bombers smashed in force today at oil dumps and airfields near Paris and at rail yards in the German border city of Saarbrücken and the Alsace Lorraine cities of Strasbourg, Mulhouse and Belfort.

Isolation Of Paris Air Drive Goal Hit Oil Dumps And Airfields By AUSTIN BEALMEAR LONDON (AP)—American heavy bombers smashed in force today at oil dumps and airfields near Paris and at rail yards in the German border city of Saarbrücken and the Alsace Lorraine cities of Strasbourg, Mulhouse and Belfort.

Isolation Of Paris Air Drive Goal Hit Oil Dumps And Airfields By AUSTIN BEALMEAR LONDON (AP)—American heavy bombers smashed in force today at oil dumps and airfields near Paris and at rail yards in the German border city of Saarbrücken and the Alsace Lorraine cities of Strasbourg, Mulhouse and Belfort.

Isolation Of Paris Air Drive Goal Hit Oil Dumps And Airfields By AUSTIN BEALMEAR LONDON (AP)—American heavy bombers smashed in force today at oil dumps and airfields near Paris and at rail yards in the German border city of Saarbrücken and the Alsace Lorraine cities of Strasbourg, Mulhouse and Belfort.

Isolation Of Paris Air Drive Goal Hit Oil Dumps And Airfields By AUSTIN BEALMEAR LONDON (AP)—American heavy bombers smashed in force today at oil dumps and airfields near Paris and at rail yards in the German border city of Saarbrücken and the Alsace Lorraine cities of Strasbourg, Mulhouse and Belfort.

Isolation Of Paris Air Drive Goal Hit Oil Dumps And Airfields By AUSTIN BEALMEAR LONDON (AP)—American heavy bombers smashed in force today at oil dumps and airfields near Paris and at rail yards in the German border city of Saarbrücken and the Alsace Lorraine cities of Strasbourg, Mulhouse and Belfort.

May Move To Entrap Large Force Of Nazis

No Official Report Of Depth Of Paris Push Or To Northward Thrust By GLADWIN HILL SUPREME HEADQUARTERS ALLIED EXPEDITIONARY FORCE (AP)—Roaming American tank forces were reported throwing the main weight of their attack to the north today after a deep mystery thrust toward Paris, and Gen. Sir Bernard L. Montgomery declared tonight that "the great bulk of the German forces in northwest Europe are in a last way."

The commander of Allied ground troops in France announced in a message to his soldiers: "We are round behind them in many places and it is possible some of them may not get away. These are momentous days and complete victory lies ahead."

There still was no official inkling as to the depth of penetration toward Paris or the progress of the northward thrust, but the Paris radio said the Americans had passed Alençon, 30 miles north of Le Mans. At Alençon the spearhead would be but 40 miles from Caen. Polish forces to the north above Falaise.

LITTLE OPPOSITION Two days had passed, however, since the Americans took Le Mans, 110 miles southwest of Paris, and latest advices from the front said little opposition had yet been encountered by the fast, geared armored and motorized formations.

An American tank to the Seine west of Paris might trap some 200,000 German troops. In the 24 hours ending at Wednesday midnight the Americans captured three miles of the German front. Montgomery was hammering at German resistance below Caen so fiercely that the Germans risked destruction if they ceased up for a getaway.

The British, supporting the Canadian-Polish attacks toward Falaise and toward Vimont, below Caen, captured the German strong hold of Thury-Harcourt, 15 miles southwest of Caen.

Below them, the Americans also were closing in around the eastern side of the German pocket at Mortain below Vire, taking Caumont and advancing to points near Domfront, three miles from the Seine.

The Americans reached points only a little more than 20 miles from Versailles. A Paris suburb, without meeting serious resistance, fell dispatched said that today's Allied command expects the destruction of 15 German tanks by aircraft somewhere in the area.

Poles Strike In Italy

By NOLAN NORGAARD ROME (AP)—A Polish thrust, launching an infantry and tank offensive along a six-mile front on the high ground overlooking the Cesano Valley and have sent patrolling across the Cesano River after a two-mile initial advance. Allied Headquarters said today.

The towns of Sapezzano, Montebello and Corinaldo were seized as the Poles swept through the Nazi defenses. The drive to the south bank of the Cesano put the next major town of Pesaro, where the outposts of the Adriatic end of the Gothic line, are believed to be in jeopardy.

STORMS SLOW ATTACK Heavy storms slowed but failed to halt the onslaught. Three hundred prisoners were taken at the beginning of the offensive and the Germans suffered further heavy casualties in attempting the unsuccessful counter-attacks in which they used a considerable number of self-propelled guns and mortars.

The hard-pressed Germans were reported to have withdrawn entirely from the south bank of the Cesano.

Troops of the Polish Carpathian division seized important high ground two miles north of Pesaro after that village was taken in the first hour of the attack.

Heavy continuous rain fell along the entire Fifth Army front and thunderstorms were common in most of the Eighth Army zone with the result that activity was limited to artillery fire and patrolling.

2 B-29 Forces Hit Japan & Sumatra

WASHINGTON (AP)—Two forces of B-29 Superfortresses lambasted centers of Japanese industrial strength 3,500 miles apart in raids yesterday that left three of the aerial giants unaccounted for and a fourth down in friendly territory.

At least three enemy craft were destroyed in carrying out the missions under cover of darkness.

The 20th Bombing Command announced this data today in providing additional details on the raids—the fourth in a series of the Boeing behemoths—with bombing results reported from both Palembang in southern Sumatra and at Nagasaki on the Japanese island of Kyushu.

The Palembang attack, officially described as the "longest bombing mission ever undertaken," was directed against the Pladuge refinery, which comes a major portion of Nippon's high octane gasoline.

See BIG PLANES on Page 6

Underground On The Spot LONDON (AP)—The Polish underground Army is fighting a losing battle in Warsaw and unless rescued soon by heroic fight must soon come to a disastrous end.

Waste Paper Can Help On SUNDAY AUGUST 20th

WASTE PAPER Is the nation's number one critical war material. CHARLOTTEANS CAN HELP ON SUNDAY AUGUST 20th by saving waste paper until the truck stops at their homes.

Underground On The Spot LONDON (AP)—The Polish underground Army is fighting a losing battle in Warsaw and unless rescued soon by heroic fight must soon come to a disastrous end.

Underground On The Spot LONDON (AP)—The Polish underground Army is fighting a losing battle in Warsaw and unless rescued soon by heroic fight must soon come to a disastrous end.

Underground On The Spot LONDON (AP)—The Polish underground Army is fighting a losing battle in Warsaw and unless rescued soon by heroic fight must soon come to a disastrous end.

Underground On The Spot LONDON (AP)—The Polish underground Army is fighting a losing battle in Warsaw and unless rescued soon by heroic fight must soon come to a disastrous end.

Underground On The Spot LONDON (AP)—The Polish underground Army is fighting a losing battle in Warsaw and unless rescued soon by heroic fight must soon come to a disastrous end.

Underground On The Spot

LONDON (AP)—The Polish underground Army is fighting a losing battle in Warsaw and unless rescued soon by heroic fight must soon come to a disastrous end.

Underground On The Spot LONDON (AP)—The Polish underground Army is fighting a losing battle in Warsaw and unless rescued soon by heroic fight must soon come to a disastrous end.

Underground On The Spot LONDON (AP)—The Polish underground Army is fighting a losing battle in Warsaw and unless rescued soon by heroic fight must soon come to a disastrous end.

Underground On The Spot LONDON (AP)—The Polish underground Army is fighting a losing battle in Warsaw and unless rescued soon by heroic fight must soon come to a disastrous end.

Underground On The Spot LONDON (AP)—The Polish underground Army is fighting a losing battle in Warsaw and unless rescued soon by heroic fight must soon come to a disastrous end.

Underground On The Spot LONDON (AP)—The Polish underground Army is fighting a losing battle in Warsaw and unless rescued soon by heroic fight must soon come to a disastrous end.

WEATHER Fair to partly cloudy and... See AMERICAN on Page 6