

Hurricane Blows Across Florida Toward Jacksonville

Livest
Newspaper
In The
Carolinas

THE CHARLOTTE NEWS

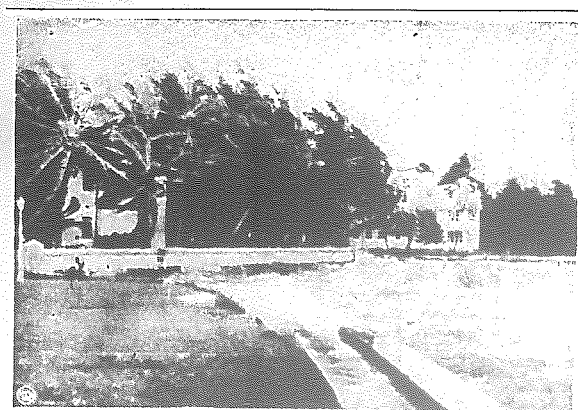
★ ★ ★ ★
Final

ESTABLISHED 1888

CHARLOTTE, NORTH CAROLINA, THURSDAY, OCTOBER 19, 1944

22 Pages—Price Five Cents

INVASION OF PHILIPPINES BY AMERICAN FORCES REPORTED



HURRICANE SWEEPS ACROSS FLORIDA — High tides lashed by gales turn Biscayne Bay in Miami into a seething cauldron in the wake of a hurricane which whipped past Key West and headed across the Florida mainland toward Jacksonville. (NEA, Telephoto.)

Hurricane A Strange Event For Carolinian Tiddim Base

By R. V. GRIFFITH
Managing Editor, The News

MIAMI, Fla.—Miami is a delightful place for Carolinians to go on vacation—but when a "dangerous hurricane" strikes, Miami is something else and "sweating out" the storm which raged here yesterday and last night is a strange, disquieting experience for a North Carolina Piedmontite.

One fourth of a million people here breathed with relief this morning after enduring the hurricane threat for 24 hours or longer. It was an eye-witness to this raging of the elements. It was the first event of nature of this kind I ever experienced, and could not resist the temptation to do a little scouting around while the blow was at its peak of fury.

I am telephoning this dispatch, because I cannot get telegraph transmission and I have succeeded in getting a long distance telephone hookup through to Charlotte. The full force of the storm did not hit Miami. We were told this morning by the Weather Bureau that the center was moving across Tampa and inland toward Jacksonville, which will experience a severe storm tonight. Nevertheless, yesterday was a tough day in Miami.

MANY WARNINGS GIVEN
The Weather Bureau took no chances—every half hour it issued warnings that "dangerous storm." It was thought then that Miami was directly in the path of the furious center. Miami boomed up and prepared for the worst, which did not happen, though the wind velocity got up to around 60 miles an hour and some gusts were unofficially reported at 80 miles an hour. If the wind had blown a little stronger it would have almost taken the fillings right out of our teeth.

Business completely suspended around noon yesterday. The store fronts were boarded up. Residents also boarded up the windows of their homes. All employees of retail concerns and other establishments were allowed to go to their homes to prepare for the approaching dangers. By 2:30 P. M. yesterday, Miami's business section was deserted, except for Military Police, the Navy's Shore Patrol, civilian policemen and a few adventurous persons belatedly trying to get to a place of safety. Bucking that wind was a heavy task. The street buses continued to service, providing the public with means to return home. School was out, too.

Persecuted people took supplies of groceries into their homes, preparing for a possible siege of several days. The Municipal Government established many "safety shelters" in sturdy public buildings, such as the schools. Fully 10,000 persons spent last night in those shelters, because of the hurricane.

See STORM NEWS on page 4

SOUTHEAST ASIA COMMAND

HEADQUARTERS, Kandy, Ceylon

—(U)—British troops advancing into Western Burma have captured the Japanese base at Tiddim, from which enemy forces launched their abortive invasion of India early this year. Allied Headquarters announced today.

The British have been closing in slowly on Tiddim for several weeks after pursuing the retreating Japanese 100 miles southward from Imphal in northeastern Burma, which the enemy attempted unsuccessfully to retake.

The fate of the Tiddim garrison was not immediately disclosed. Small British forces, however, have been reported operating along the Japanese escape route to the south after filtering through the jungles.

The Japanese had made their first determined stand at Tiddim since starting their retreat from India at Bhamapur. They were aided in their defense of the base—which they had been building up since November, 1943—by the terrain and by monsoon conditions.

First troops to enter Tiddim were units of the 5th Indian Division, veterans of the African campaign and the first Burma campaign.

Storm Sweeps Over Citrus-Growing Area

Moves Along After Striking Inland From Gulf In Tampa Region

JACKSONVILLE, Fla. — (AP) — A Caribbean hurricane blew up the Florida Peninsula toward this city and the Atlantic Ocean today after striking inland at dawn from the Gulf of Mexico in the populous Sarasota-Tampa-St. Petersburg area.

No casualties were reported as the storm swept across the citrus-growing area of the state, but some property damage resulted and the citrus growers were apprehensive their crops might suffer heavily.

Florida's damage was slight compared to that of western Cuba, where the storm hit yesterday, causing at least seven deaths, including two to 300 and 400 persons, and immense property damage.

The U. S. Weather Bureau ordered hurricane warnings for the Atlantic seaboard from Daytona Beach, Fla., to Cape Hatteras, N. C. The storm had lost some of its intensity in blowing across Florida.

A Navy tug missing in the Key West area established radio contact today and reported all 31 men aboard safe. The 31 men included 21 the tug picked up from an abandoned lifeboat off Key West.

CITRUS DAMAGE
Reports of the hurricane's devastation in Western Cuba were still incomplete, but at least three small vessels were sunk. Seven deaths were confirmed. Communication with outlying districts, however, has not been established. Five other persons may have drowned when two Havana-Miami freight schooners, the Bacardi and the Polaris, were reported missing.

See STORM NEWS on page 4

British And Yanks Rock Nazis Back

By ALEX H. SINGLETON

LONDON (AP) — British Tommies and American armor rocked the Germans back toward Veno on the Meuse (Meuse) from the Holland salient today in what appeared to be the preliminaries to an offensive aimed at breaking organized German resistance before Christmas.

Canadian forces were less than two miles from the German gun at Breskens commanding the sea entrance to the port, from the pocket south of Scheide.

On Aachen, has increased in violence. The timing raised the possibility of a grand strategy plan to beat the Nazis by smashing simultaneously at East Prussia, heart of German militarism, while wrecking the Rhine-Ruhr Valley, the center of German industry.

The Germans had been claiming that the British offensive in East Holland, "a support of the American attack on Aachen, has increased in violence."

The timing raised the possibility of a grand strategy plan to beat the Nazis by smashing simultaneously at East Prussia, heart of German militarism, while wrecking the Rhine-Ruhr Valley, the center of German industry.

The Germans had been claiming that the British offensive in East Holland, "a support of the American attack on Aachen, has increased in violence."

The timing raised the possibility of a grand strategy plan to beat the Nazis by smashing simultaneously at East Prussia, heart of German militarism, while wrecking the Rhine-Ruhr Valley, the center of German industry.

The Germans had been claiming that the British offensive in East Holland, "a support of the American attack on Aachen, has increased in violence."

The timing raised the possibility of a grand strategy plan to beat the Nazis by smashing simultaneously at East Prussia, heart of German militarism, while wrecking the Rhine-Ruhr Valley, the center of German industry.

Report Reds Well Into East Prussia

Big Soviet Drive Said To Be On

LONDON — (AP) — Russian forces backed by 500 tanks have penetrated well into East Prussia where the German border town of Rydubun has been evacuated.

The deepest Russian penetration was in the Rydubun area 37 miles east of Interburg and the Red Army has passed this town, Berlin said. The Russians have advanced further on German soil.

The German communiqué acknowledged loss of the town but insisted that a break-through had not occurred.

FRONT WIDENED
The front was widened from 30 to 40 miles overnight with the Russians extending their attacks to the area of Suwalki, center of a triangle which Hitler annexed from Poland to East Prussia in 1939.

The enemy admission came within hours after the Russians announced an invasion of Czechoslovakia in the south on a 40-mile front.

The German communiqué said 250 Russian tanks had been disabled in the three-day battle at the edge of East Prussia, a campaign not yet announced by the Kremlin.

Strong Russian attacks were reported west of Riga and southeast of the Latvian escape port of Liepaja, through which remnants of perhaps ten trapped German divisions in the Baltics must attempt an escape.

Beyond the German front, the command reported heavy fighting on the Arctic road leading into the frozen wastes of Northern Norway.

The Germans early tonight reported another Russian offensive along a 60-mile stretch of the Narva River across Warsaw which they declared was aimed at the defense of Danzig, where some of the first shots of the war were fired.

The Germans early tonight reported another Russian offensive along a 60-mile stretch of the Narva River across Warsaw which they declared was aimed at the defense of Danzig, where some of the first shots of the war were fired.

The Germans early tonight reported another Russian offensive along a 60-mile stretch of the Narva River across Warsaw which they declared was aimed at the defense of Danzig, where some of the first shots of the war were fired.

The Germans early tonight reported another Russian offensive along a 60-mile stretch of the Narva River across Warsaw which they declared was aimed at the defense of Danzig, where some of the first shots of the war were fired.

The Germans early tonight reported another Russian offensive along a 60-mile stretch of the Narva River across Warsaw which they declared was aimed at the defense of Danzig, where some of the first shots of the war were fired.

The Germans early tonight reported another Russian offensive along a 60-mile stretch of the Narva River across Warsaw which they declared was aimed at the defense of Danzig, where some of the first shots of the war were fired.

Japs Report MacArthur Has Made Return

Declare U. S. Forces Landed On Suluan, At Entrance To Leyte Gulf

By ASSOCIATED PRESS
American expeditionary forces are invading the Philippines, Tokyo radio reported today, striking at the very center of the vulnerable eastern flank of the archipelago.

Domei News Agency said flatly that United States forces had begun their "re-invasion of the Philippines," supported by powerful units of the Pacific Fleet and China-based aircraft.

Sea forces, Domei said, included "the naval fleet under the command of Gen. Douglas MacArthur."

An official Japanese communiqué said "the enemy fleet" accompanied transports into sparsely populated Leyte Gulf Tuesday (Manila time) and for the last two days Naval guns and carrier aircraft have been bombarding shore defenses.

"Part of the enemy forces seem to have landed on Suluan Island at the entrance to the gulf," Domei news agency said.

Domei asserted Vice Adm. Marc A. Mitscher's powerful Task Force 58—the carrier arm of the Pacific Fleet—was not participating in the invasion because of asserted losses suffered off Formosa.

There have been denials by Adm. Chester W. Nimitz, U. S. Pacific Fleet Commander in Chief, that the fleet was not participating in the invasion because of asserted losses suffered off Formosa.

There have been denials by Adm. Chester W. Nimitz, U. S. Pacific Fleet Commander in Chief, that the fleet was not participating in the invasion because of asserted losses suffered off Formosa.

There have been denials by Adm. Chester W. Nimitz, U. S. Pacific Fleet Commander in Chief, that the fleet was not participating in the invasion because of asserted losses suffered off Formosa.

There have been denials by Adm. Chester W. Nimitz, U. S. Pacific Fleet Commander in Chief, that the fleet was not participating in the invasion because of asserted losses suffered off Formosa.

There have been denials by Adm. Chester W. Nimitz, U. S. Pacific Fleet Commander in Chief, that the fleet was not participating in the invasion because of asserted losses suffered off Formosa.

There have been denials by Adm. Chester W. Nimitz, U. S. Pacific Fleet Commander in Chief, that the fleet was not participating in the invasion because of asserted losses suffered off Formosa.

There have been denials by Adm. Chester W. Nimitz, U. S. Pacific Fleet Commander in Chief, that the fleet was not participating in the invasion because of asserted losses suffered off Formosa.

There have been denials by Adm. Chester W. Nimitz, U. S. Pacific Fleet Commander in Chief, that the fleet was not participating in the invasion because of asserted losses suffered off Formosa.

Two-Minute News Roundup

By THE ASSOCIATED PRESS

The For East
A new Tokyo broadcast heard by Hines quotes a Japanese communiqué as saying that American invasion forces in the Central Philippines have started trying to land on Leyte Island.

There still is no word from our side of the invasion. But the continued flood of Japanese statements appears to leave little room for doubt that the Philippines invasion actually is underway.

The top for the various Japanese announcements comes in a radio announcement beamed to the Filipino people. The message quotes Jap General Homma, the man who took over in Manila after Bataan and Corregidor fell.

Homma is believed to have been relieved of his Philippines job because he was not able to cope with Filipino guerrillas who remained loyal to America. This Jap general now comes out with what he calls a message of sympathy, telling the Filipinos that the Americans are coming into the land.

Homma is believed to have been relieved of his Philippines job because he was not able to cope with Filipino guerrillas who remained loyal to America. This Jap general now comes out with what he calls a message of sympathy, telling the Filipinos that the Americans are coming into the land.

Western Front
British Second Army forces in the Netherlands have pushed the Germans back toward the Meuse River town of Veno, American First Army troops have knocked back another German thrust against attacks northeast of Aachen.

The War Department in Washington has announced that American casualties on the Western front since D-Day total 174,780 men, as of Oct. 3. Twenty-nine thousand eight hundred killed, with 130,227 wounded and 14,741 missing.

On The Home Front
Norfolk, Va., is under hurricane alert, and hurricane warnings are up all the way from Daytona, Fla., to Cape Hatteras, N. C.

The Norfolk Weather Bureau indicates that there's a good chance the storm will move out to sea before it gets that far up the coast.

The first effects of the hurricane already have been felt in Jacksonville, Fla., where winds have been broken by strong winds. The Weather Bureau has warned the south Florida area to get out for winds up to 80 miles an hour and more.

AMERICANS BOMB FORMOSA—Jap planes with the Rising Sun on their wings are caught on the ground at Kagi, Formosa, by warplanes of the U. S. Pacific Fleet. Large hangar shows effects of the attack, while industrial sheds in the upper left billow clouds of smoke as bombs explode from warcraft just pulling out of its dive. More than 97 Jap planes were destroyed on the ground during this day's raids. (U. S. Navy Photo from NEA.)

AMERICANS BOMB FORMOSA—Jap planes with the Rising Sun on their wings are caught on the ground at Kagi, Formosa, by warplanes of the U. S. Pacific Fleet. Large hangar shows effects of the attack, while industrial sheds in the upper left billow clouds of smoke as bombs explode from warcraft just pulling out of its dive. More than 97 Jap planes were destroyed on the ground during this day's raids. (U. S. Navy Photo from NEA.)

AMERICANS BOMB FORMOSA—Jap planes with the Rising Sun on their wings are caught on the ground at Kagi, Formosa, by warplanes of the U. S. Pacific Fleet. Large hangar shows effects of the attack, while industrial sheds in the upper left billow clouds of smoke as bombs explode from warcraft just pulling out of its dive. More than 97 Jap planes were destroyed on the ground during this day's raids. (U. S. Navy Photo from NEA.)

AMERICANS BOMB FORMOSA—Jap planes with the Rising Sun on their wings are caught on the ground at Kagi, Formosa, by warplanes of the U. S. Pacific Fleet. Large hangar shows effects of the attack, while industrial sheds in the upper left billow clouds of smoke as bombs explode from warcraft just pulling out of its dive. More than 97 Jap planes were destroyed on the ground during this day's raids. (U. S. Navy Photo from NEA.)

AMERICANS BOMB FORMOSA—Jap planes with the Rising Sun on their wings are caught on the ground at Kagi, Formosa, by warplanes of the U. S. Pacific Fleet. Large hangar shows effects of the attack, while industrial sheds in the upper left billow clouds of smoke as bombs explode from warcraft just pulling out of its dive. More than 97 Jap planes were destroyed on the ground during this day's raids. (U. S. Navy Photo from NEA.)

